



REVERE MINING LIMITED

ANNUAL GENERAL MEETING

30 November 2007

Technical Presentation



Revere Mining Limited

- Project Overview
- 2007 Exploration Program & Results
- Future Exploration

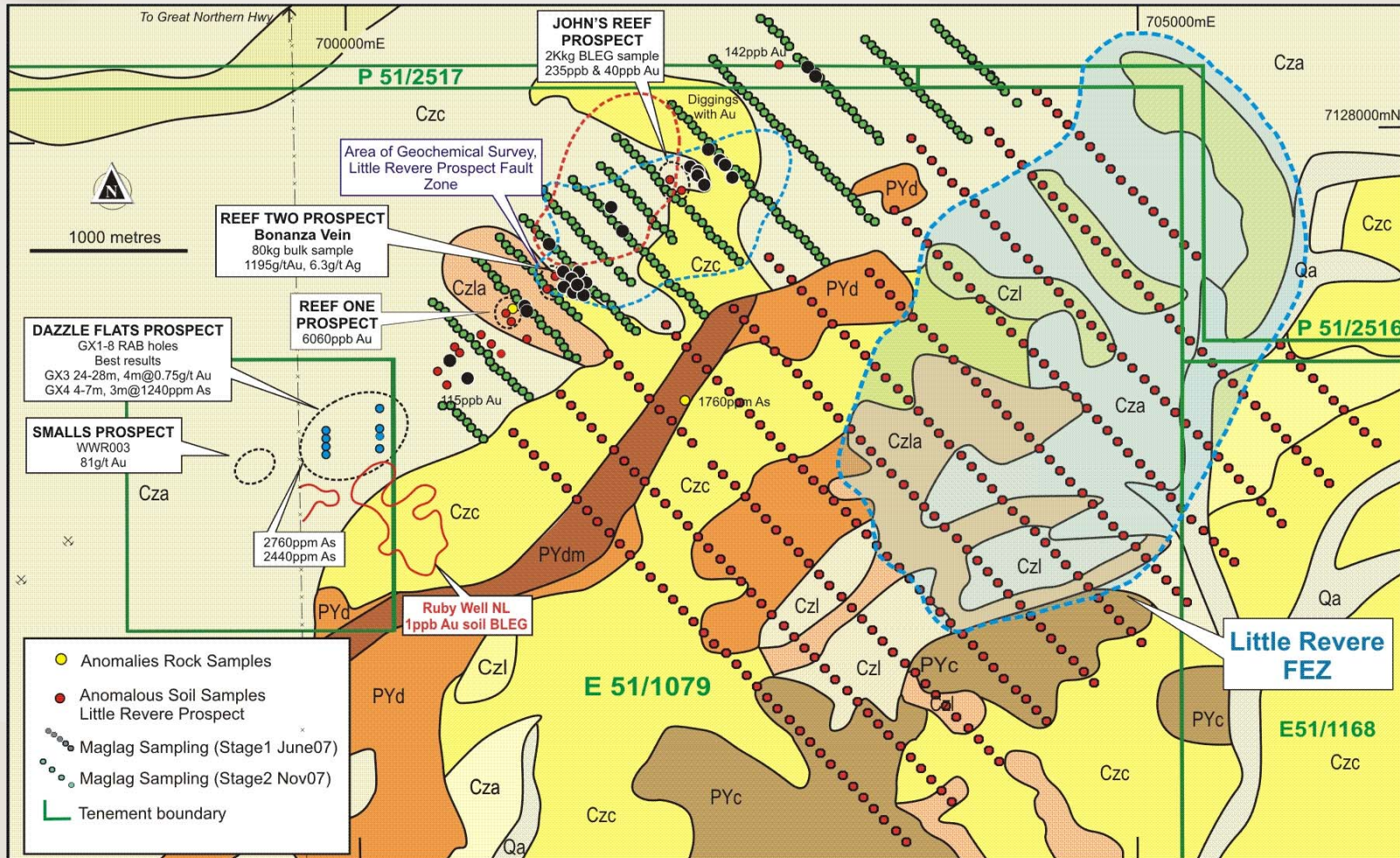


2007 Exploration Program

- Satellite Imagery
- Airborne geophysical survey
- Maglag Surveys
- AC drilling at Little Revere & Doug's Find
- Auger Drilling



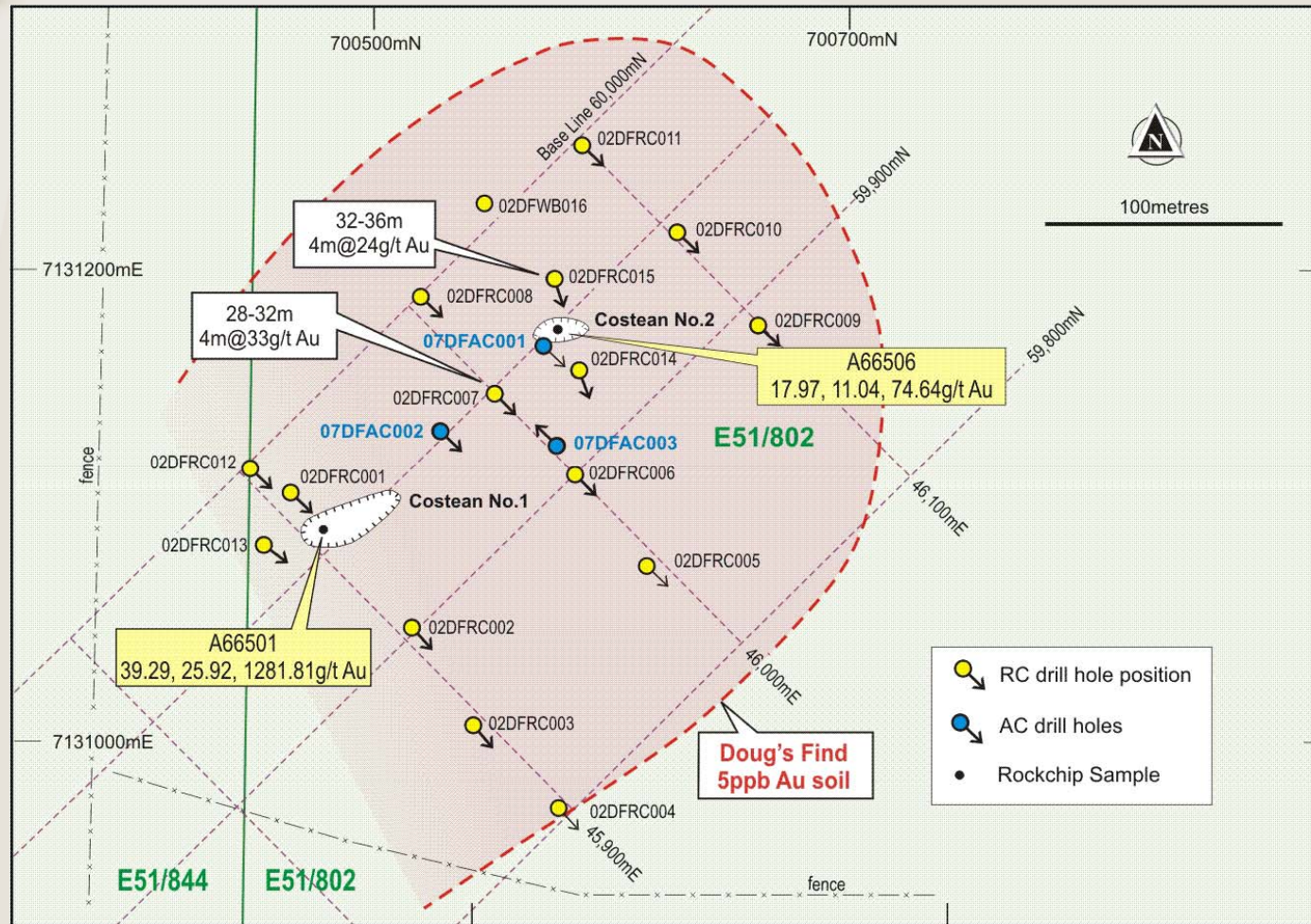
Little Revere Prospect



For personal use only



Doug's Find Prospect



For personal use only

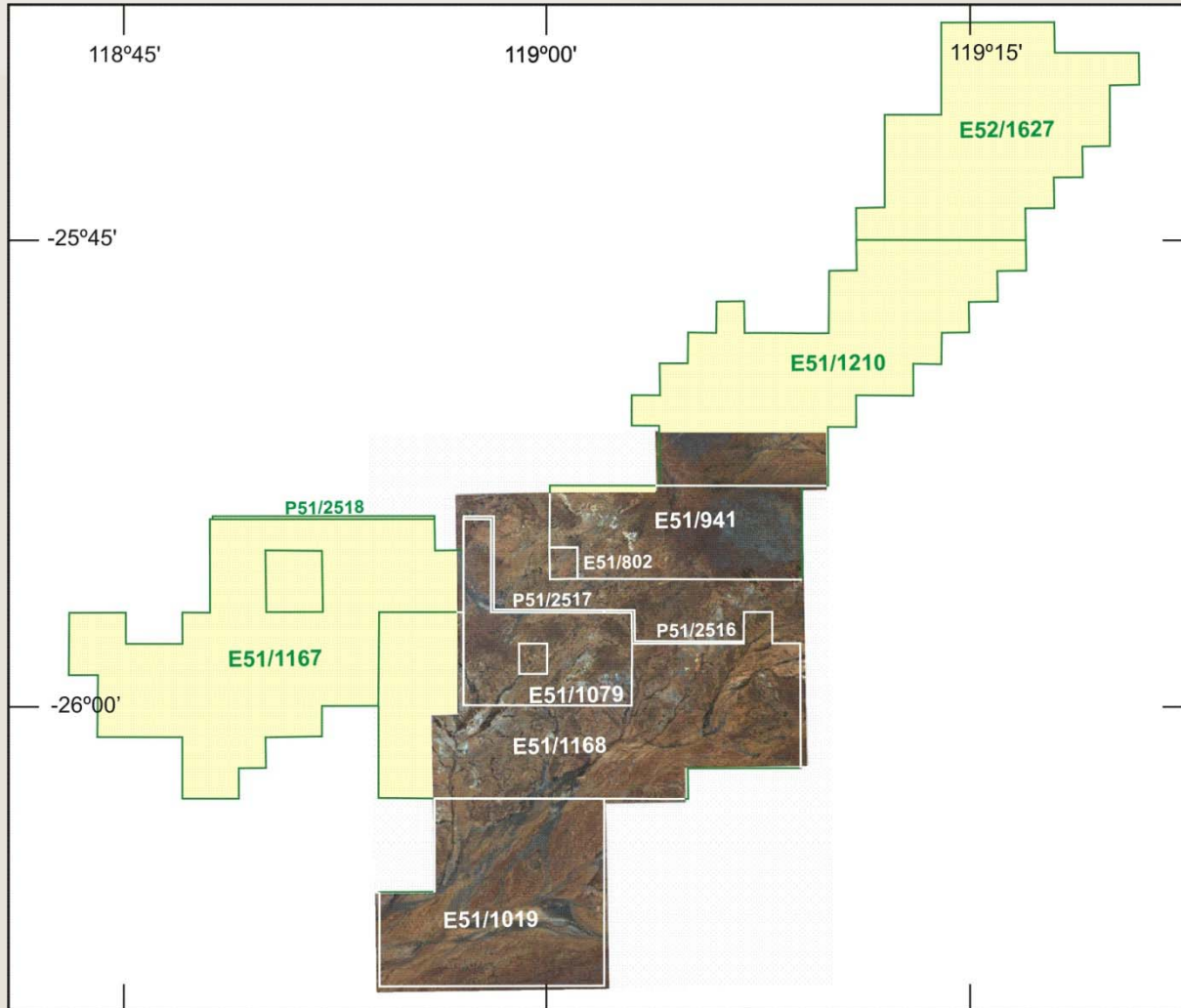


Conclusions from Drill Program

- Flat extensional quartz veins
- Hematite alteration
- Patchy gold distribution at Little Revere & Dougs Find

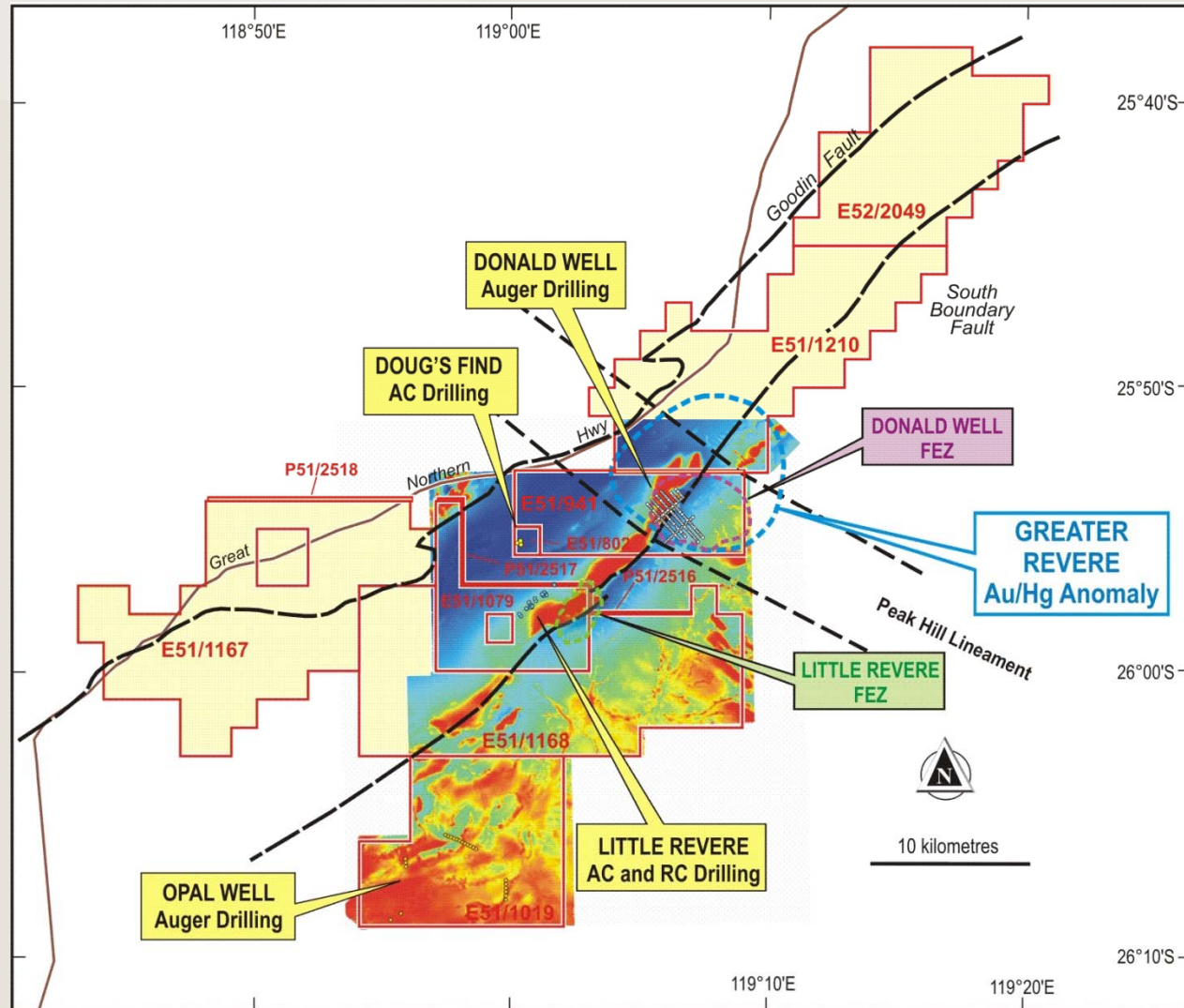


Quickbird Satellite Imagery



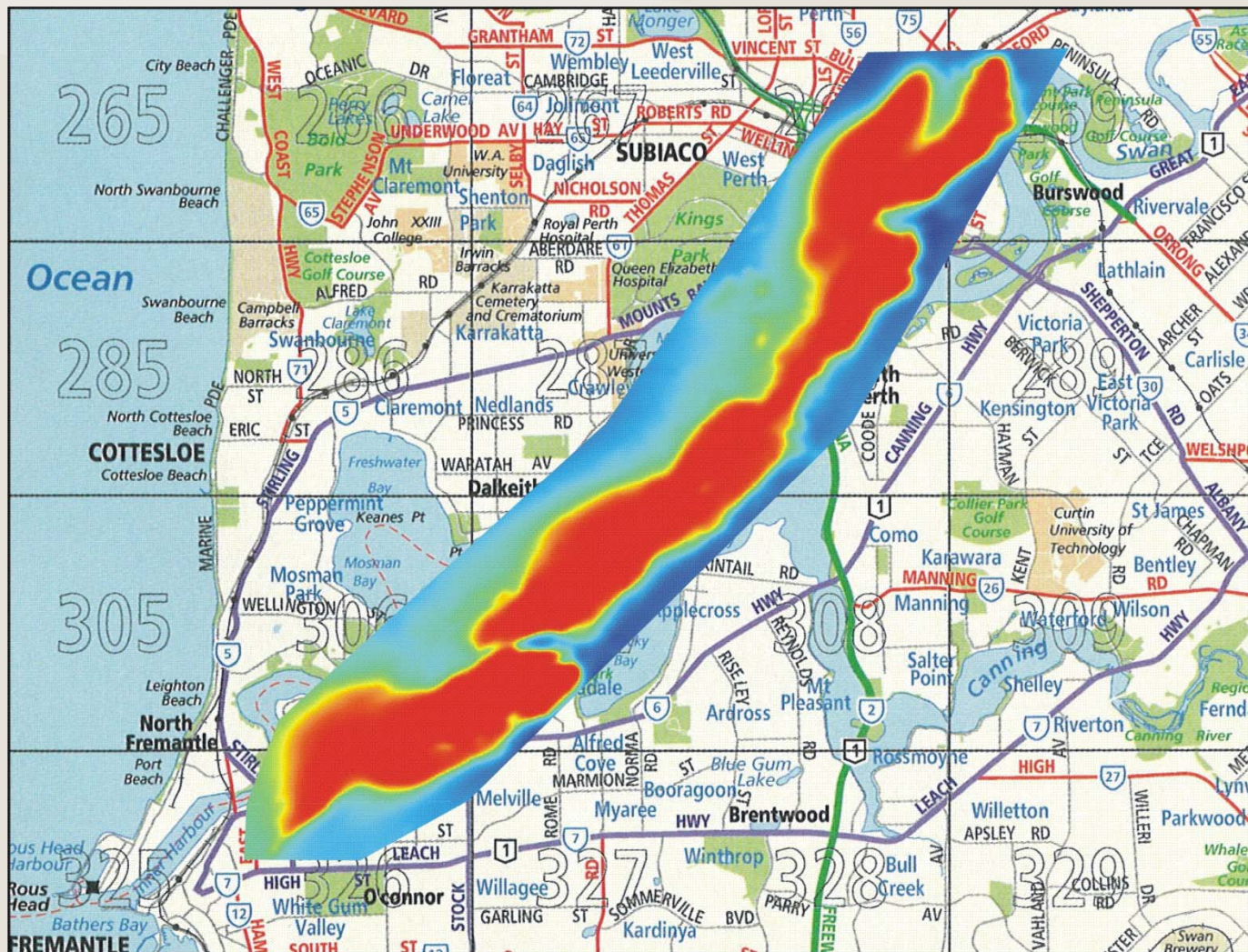


Greater Revere Magnetics



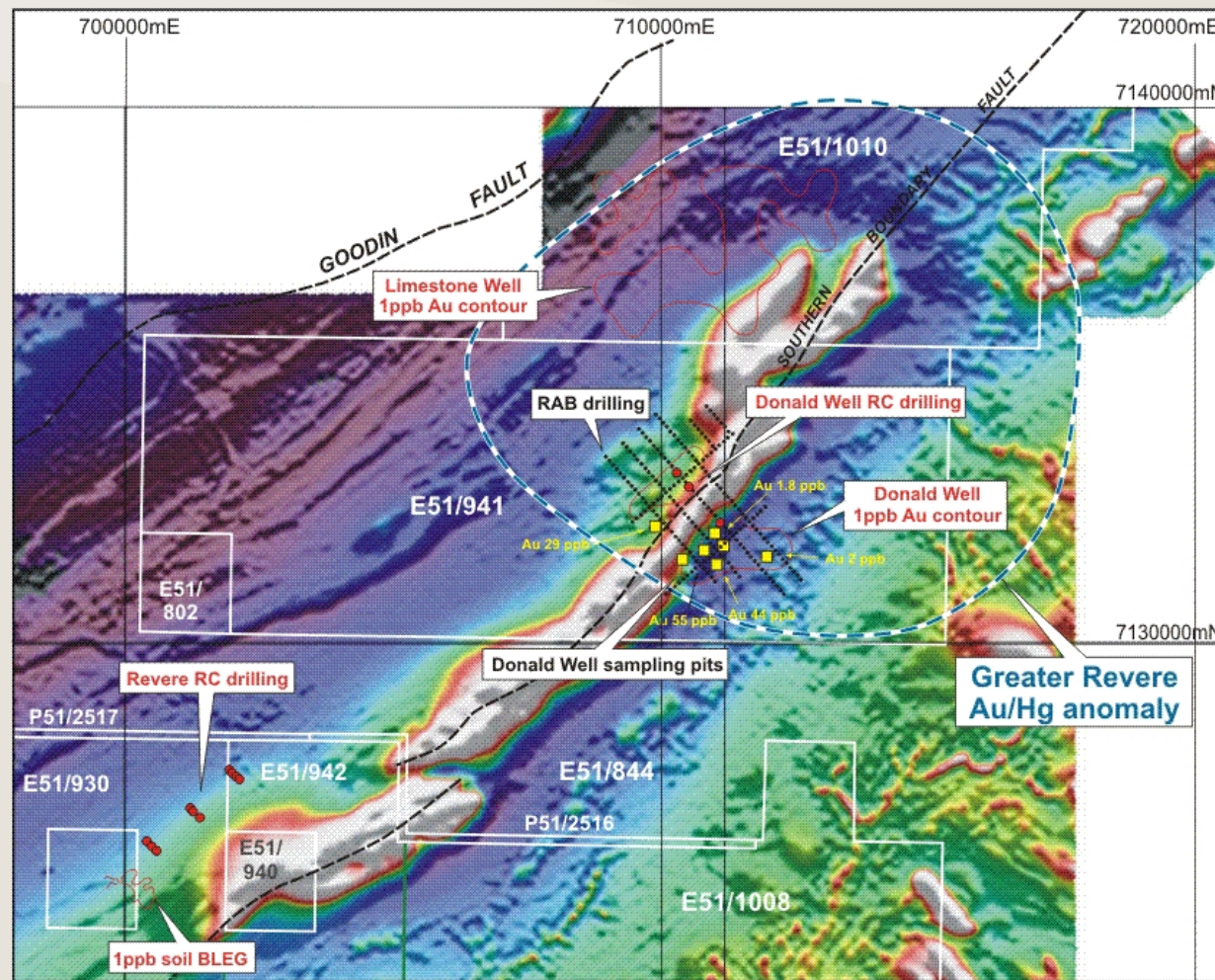


Greater Revere Alteration Zone (GRAZ) over Perth





Exploration over GRAZ





Conclusions from Airborne Survey

- 16km-long magnetic anomaly
- Interpreted as alteration zone
- Greater Revere Alteration Zone (GRAZ)
- Deep basinal fluids
- Prospective for Iron Oxide-Copper-Gold deposits

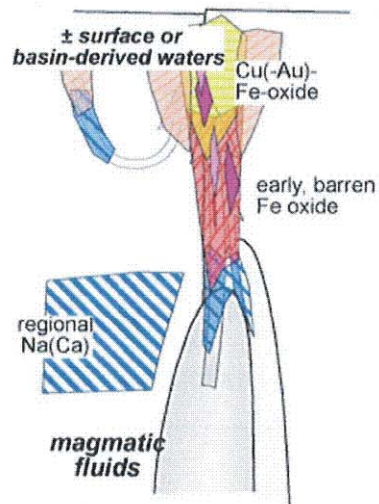


Iron Oxide-Copper-Gold Models

Alternative Models Based on Principal Fluid Sources

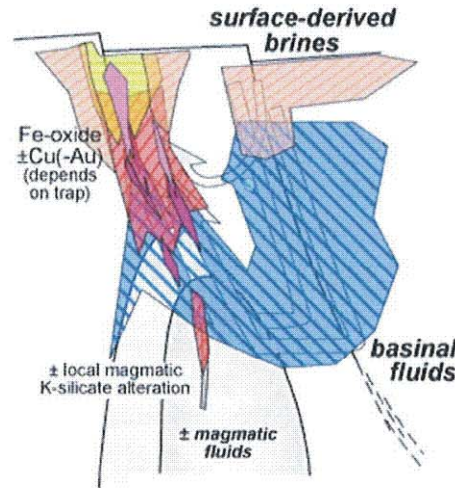
M.D. Barton and D.A. Johnson (2004)

Magma-derived



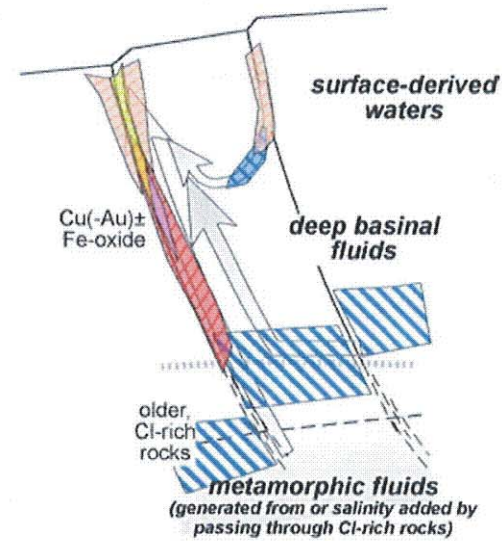
Specialized magmas (alkaline or otherwise)

Surface or basin-derived



Igneous heat ± cation source (other heat sources possible)

Metamorphic-derived

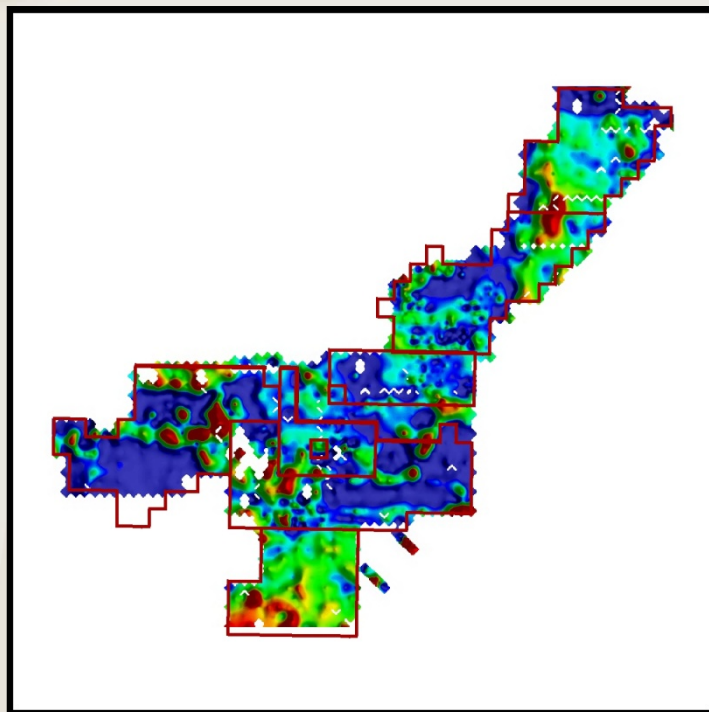


Tectonic/metamorphic drive for fluid production & flow

Cu(-Au) mineralization — Cpy/Bn ± Hm/Mt ± Py	H ⁺ alteration — Ser(Mu)/Chl + Qz + Hm	K alteration (type I) — Biot/Kfsp ± Mt/Hm + Act/Cpx
Fe-oxide mineralization — Mt(±Ap)/Hm ± Py ± Cpy	Na(Ca) alteration — Na plag/Scap + Cpx/Act/Chl	K alteration (type II) — Kfsp + Hm (Biot + Mt)

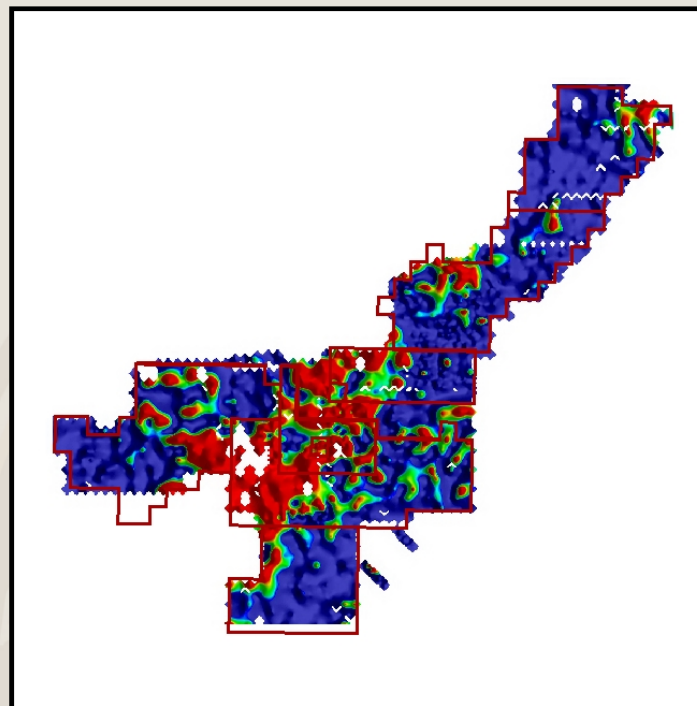


Exploration Program



Cu ppm maglag

Ba ppm maglag





Future Exploration

- Gravity Survey over magnetic anomaly
- Geo-electrical survey to locate sulphides
- Deep RC-diamond drilling

For personal use only



Revere Mining Limited

