

For personal use only



REVERE MINING LIMITED



REVERE MINING LIMITED



Proposed Merged Entity

Technical Presentation

following

General Meeting

14 July 2008



CORPORATE OBJECTIVES



**DISCOVERY & EXPLOITATION
OF
LARGE & HIGHLY PROFITABLE
WORLD CLASS MINERAL DEPOSITS
(OREBODIES)**



ENTERPRISE METALS LIMITED



Consolidation of WA gold, base metal, iron ore and uranium projects

Most projects 100% owned, plus 2 JV's with Mark Creasy

Focus on projects with known mineralisation - drillable targets

Priority access to drill rigs secured through contracts

Proven and experienced Senior Management

Backed by strong Exploration Team



CORPORATE STRUCTURE

Post Consolidation



Revere issued Capital:	38.5765 M shares
Enterprise:	37.0000 M shares
Total	75.5765 M shares

RVM Options:	5.0 M @ 25 cents
	2.5 M @ 50 cents

Cash at bank:	\$2.6 million
---------------	---------------

Share price (close 11 July 08)	\$0.235
Market Capitalisation:	\$17.76 million



BOARD OF DIRECTORS

Post Consolidation

Paul Larsen - Non Executive Chairman

- private company director with 26 years experience in construction, management and major projects

Dermot Ryan - Managing Director

- geologist with 31 years experience inc. 20 years CRA Ltd, former GM Exploration Great Central Mines, current non-executive Director Legend Mining Ltd. FAusIMM & CP (Geo)

Bruce Hawley - Executive Director

- chemical engineer with 35 years experience in exploration, development and construction phases of mining projects. FAusIMM & CP (Management)

Peter Del Fante - Non Executive Director

- 19 years experience in exploration and mining tenement management, current non-executive Director Prime Minerals Ltd



STRONG MULTI-COMMODITY EXPLORATION TEAM (XSERV)

GEOLOGISTS

- Neil Provins
- Steve Hart
- Hugh Bunge
- Frank Doedens
- Philippe Koehn

GEOCHEMIST

- Oliver Robertson

GEOPHYSICISTS

- Bill Robertson
- Geoff Garton

DATABASE/GIS SPECIALISTS

- Peter Litic
- Brett Scott
- Tanya O'Dea

EXPANDED PROJECT PORTFOLIO



EXISTING PROJECT

- Revere Au



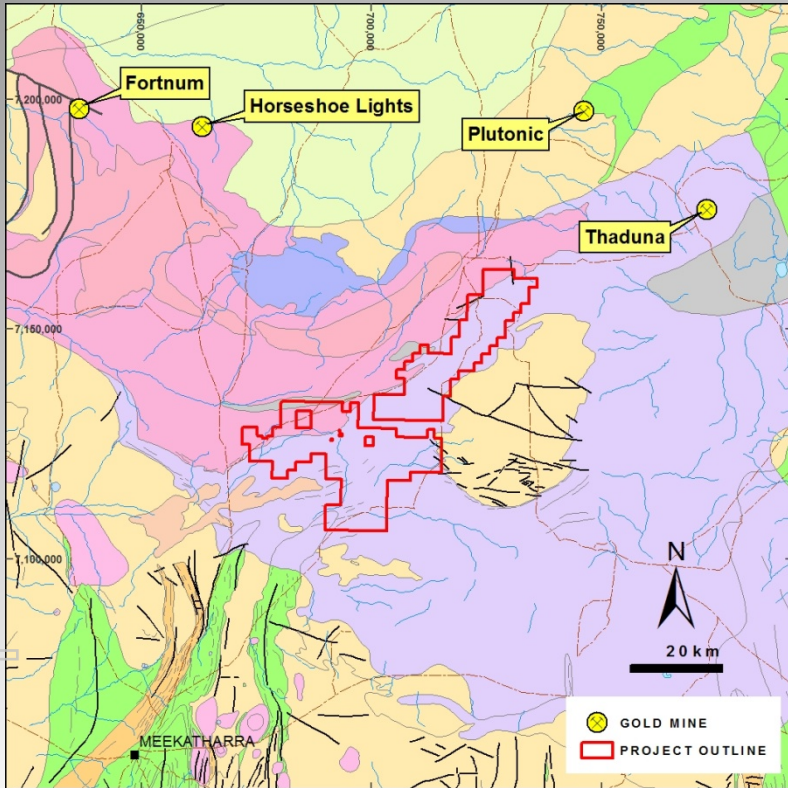
NEW PROJECTS

- Darlot Au
- Wattagee Au/BM
- Sylvania U, BM, Fe
- Earraheedy Fe
- Yalgoo Au, Fe
- Maitland U
- Lake Mason U
- Wongan U

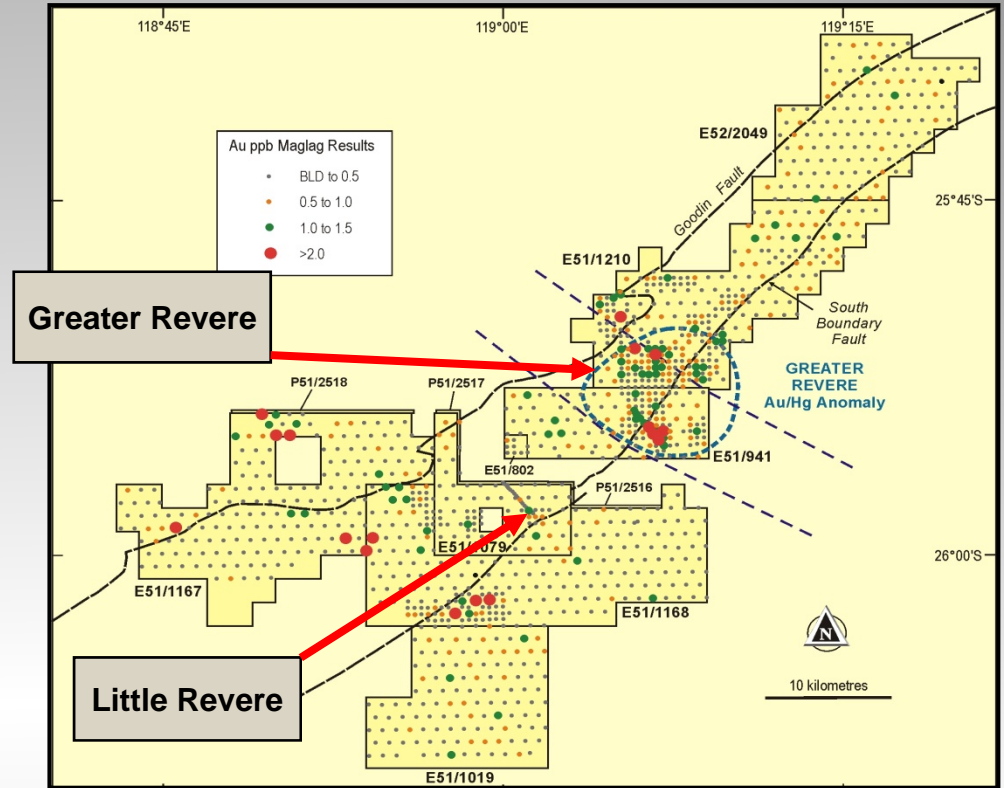


Revere Project

Gold in Proterozoic sediments



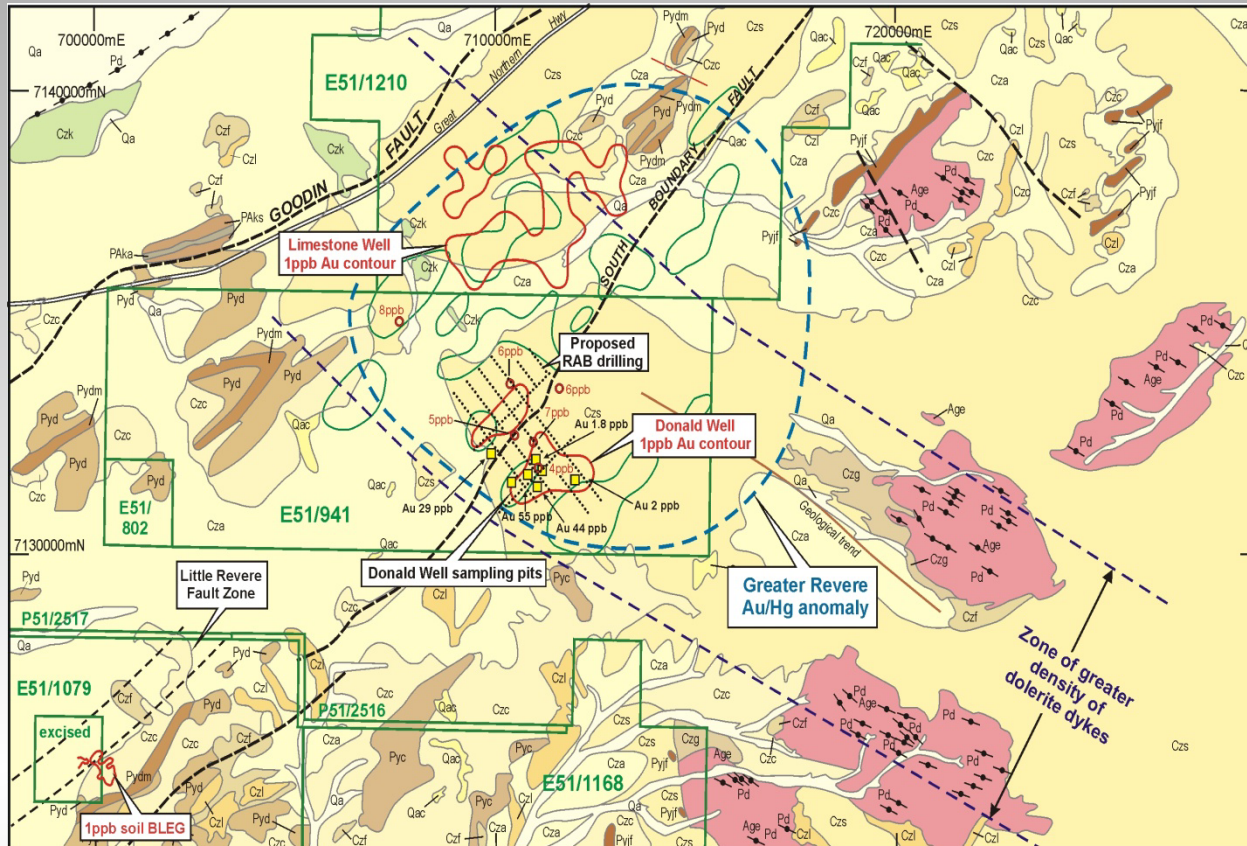
Intersection of Major Structures



- Proterozoic sediments overlying shallow Archaean greenstones

For personal use only

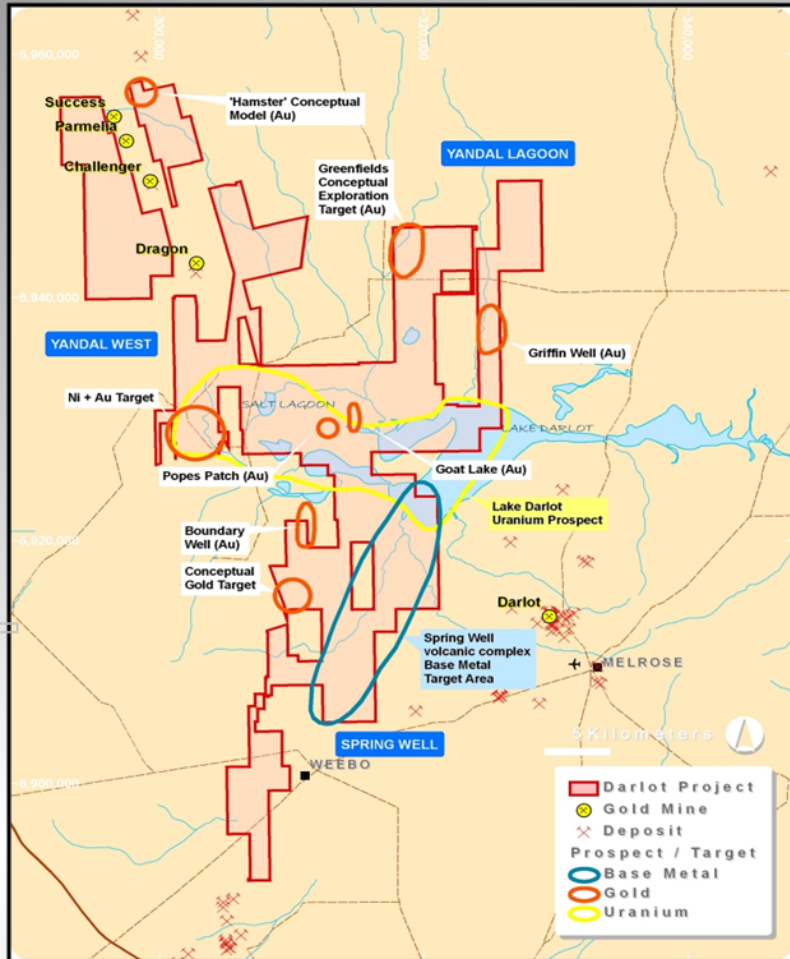
Intersection of Major Structures



- Little previous drilling in Revere area
- Excellent gold targets based on structure and geochemistry

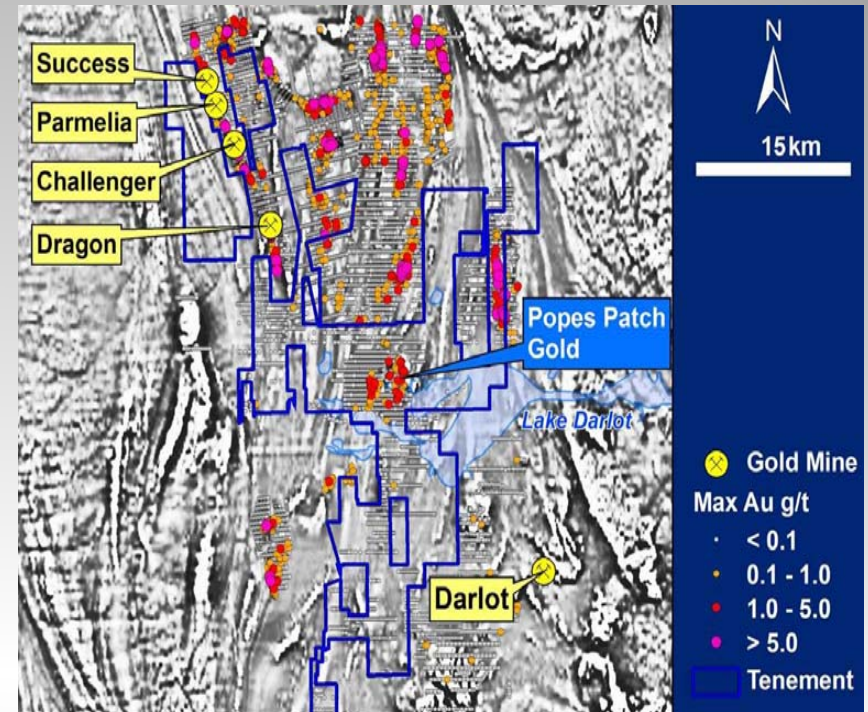


Gold and Base Metal targets



Darlot Project

Historic Gold drilling results

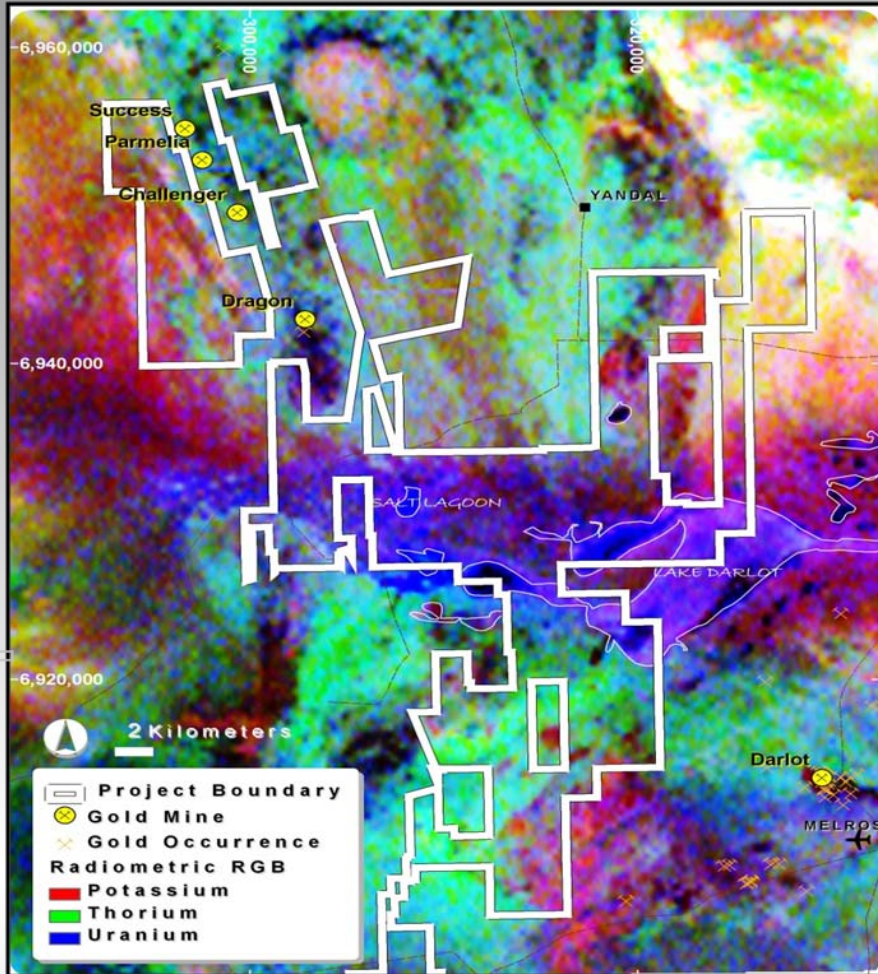


- Little previous drilling on Lake Darlot itself
- Excellent gold/base metal targets based on structure/previous RAB drilling

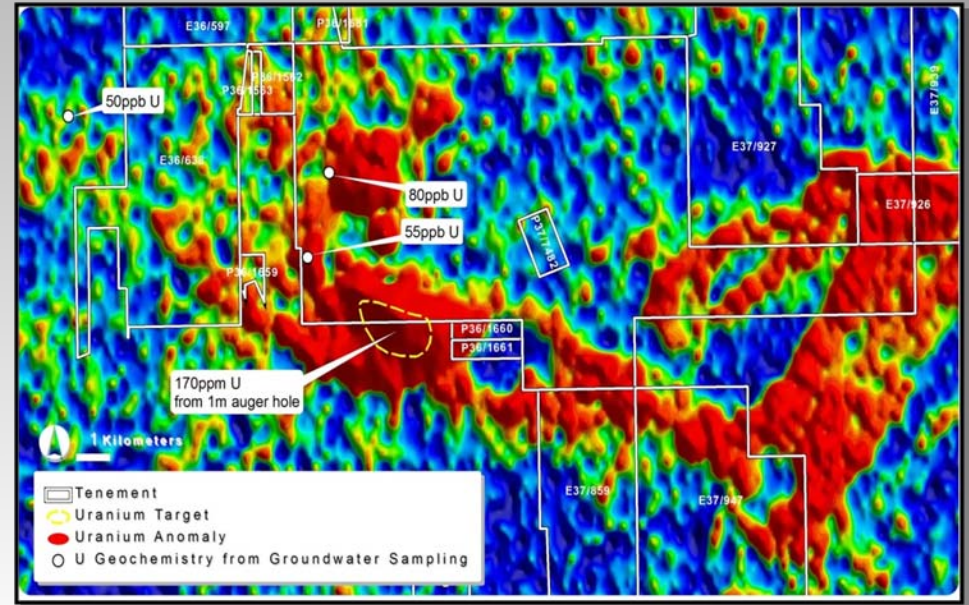


Darlot Project

RGB Image Channel



Uranium Channel

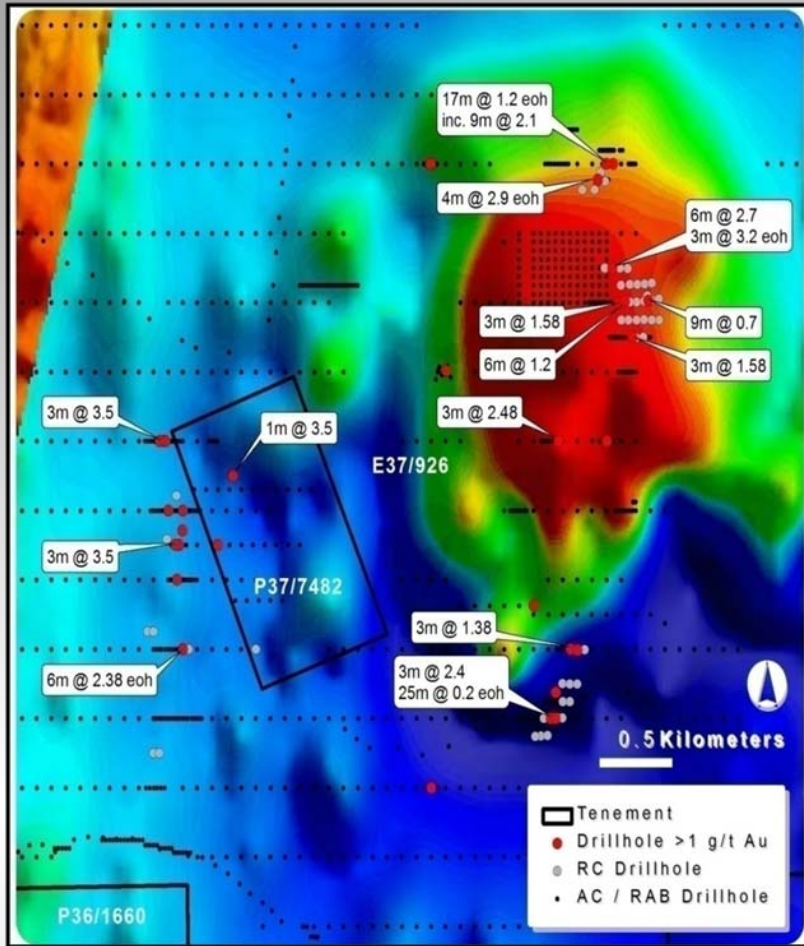


- Covers 50% of Lake Darlot, Yandal greenstone belt
- Calcrete hosted model, “Yeelirrie style”
- Downstream from BHPB’s Yeelirrie, 52,500t U₃O₈
- Strong evidence in GSWA radiometric data
- Little previous drilling on Lake Darlot itself
- Excellent gold targets based on structure/ RAB

For personal use only

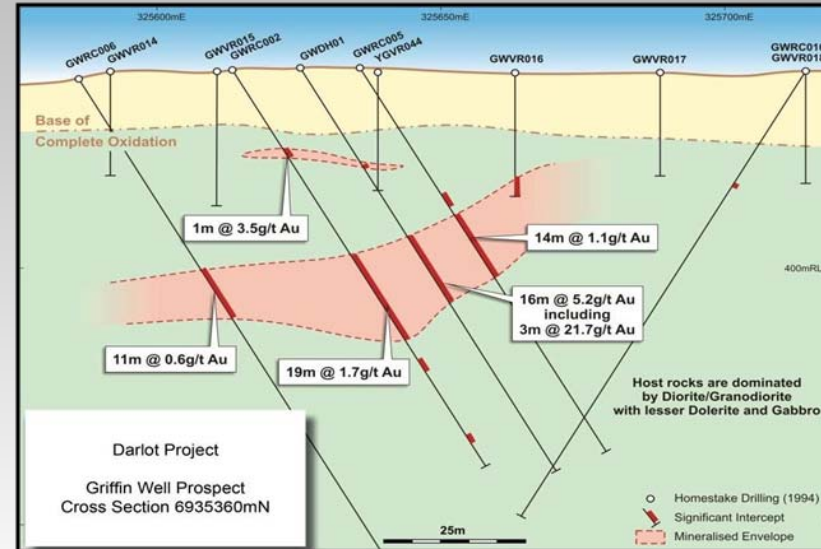


Popes Patch gold target



Darlot Project

Griffin Well cross section



- Large under drilled gold system at Popes Patch
- Oblique high grade structure intersected at Griffin Well
- Not properly tested by drilling on E-W sections
- Excellent gold targets based on structure/ RAB

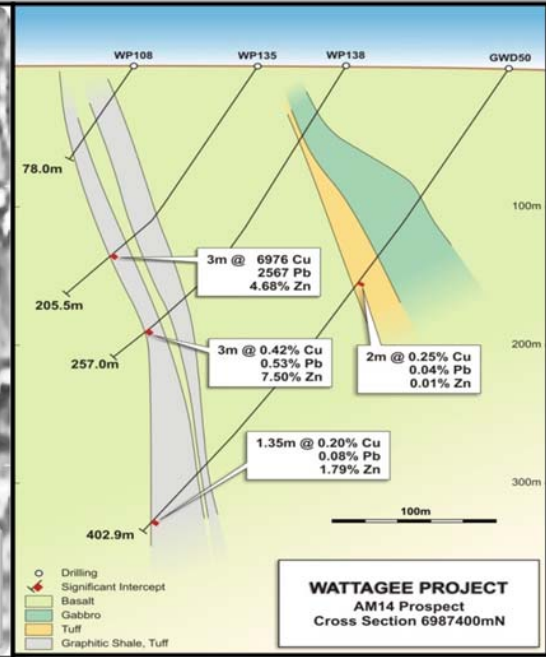
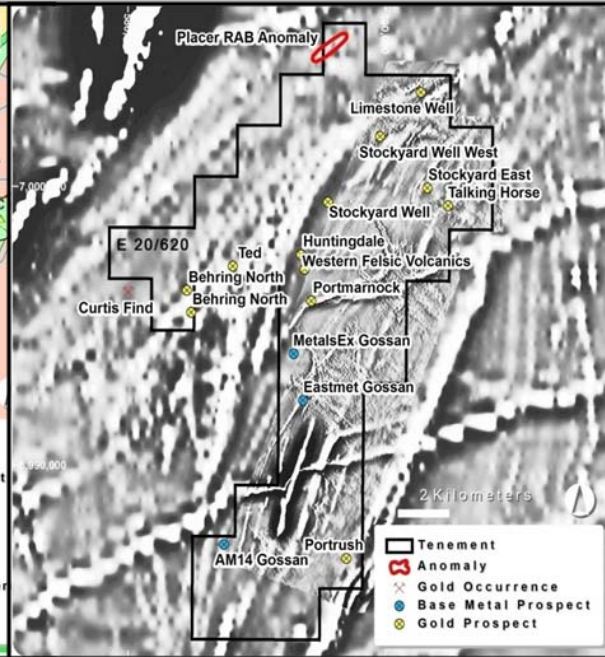
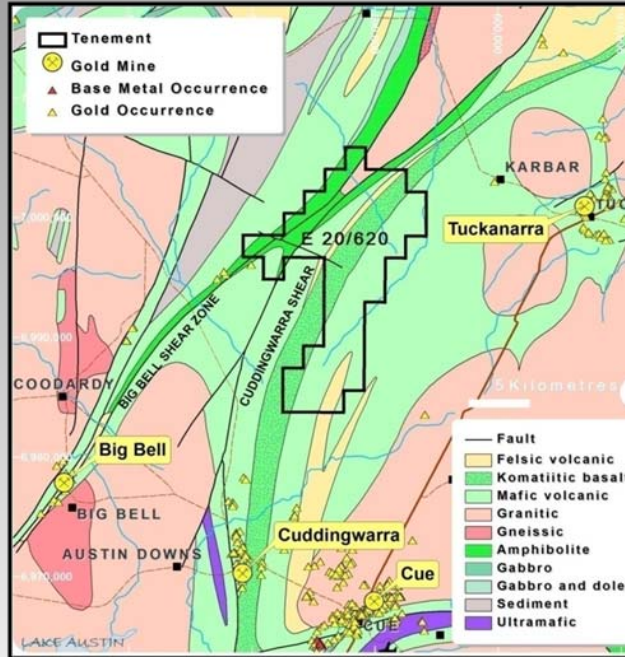


Wattagee Project

Geology

Magnetics and Prospects

AM 14 Base metal prospect



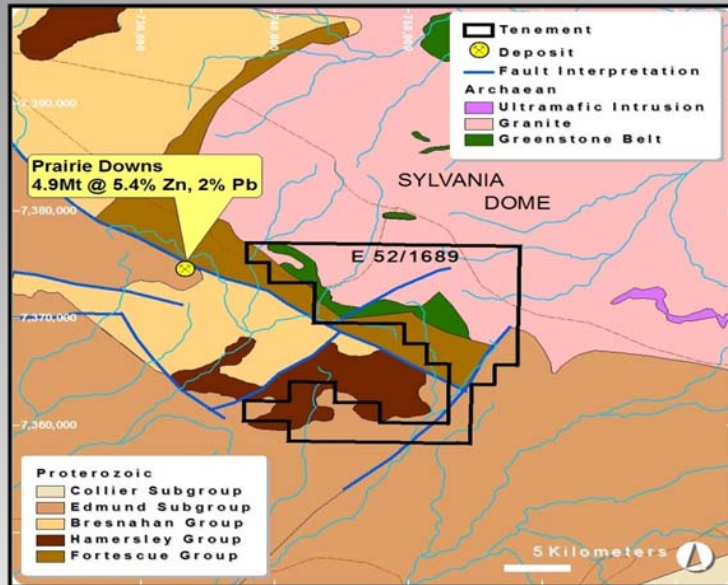
- Covers 143 km² prospective Archaean greenstone belt (Au) & felsic volcanics (VMS Cu/Zn)
- “Big Bell” style conceptual targets for gold along Cuddingwarra Shear
- Detailed magnetics have defined structure, anomalous gold trends in RAB
- Early RC results encouraging, eg. 4m @ 17.9g/t Au from 114m, 8m @ 2.6% Zn,
- Now requires serious RC drill testing

For personal use only

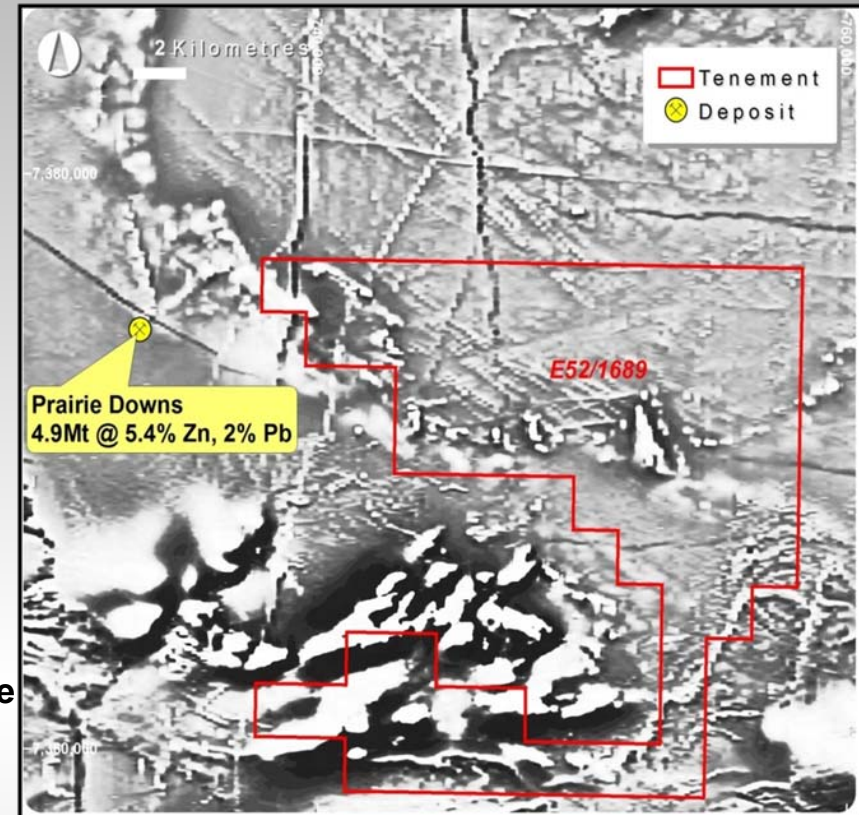


Sylvania Project

Geology



Magnetics



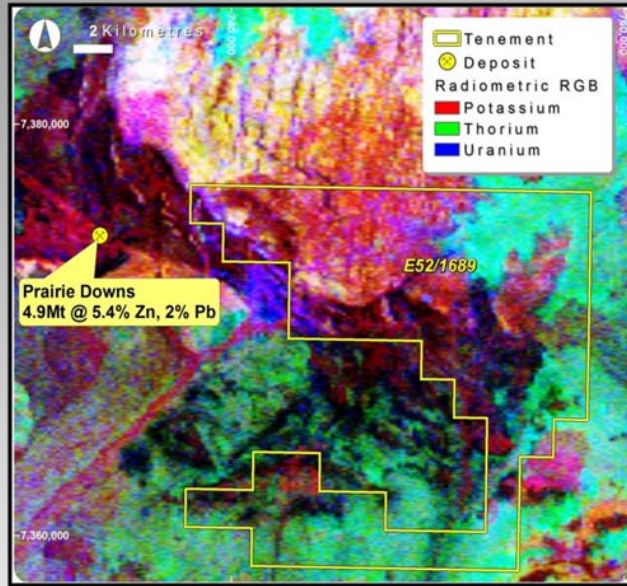
- Potential for gold, base metal, uranium and iron ore
- Gold at Deadman Hill in Archaean greenstones
- Base metals associated with Prairie Downs Fault
- Uranium in calcrete and also on unconformity
- Recent drilling in adjacent tenement by iron ore major in Brockman Iron Formation

For personal use only

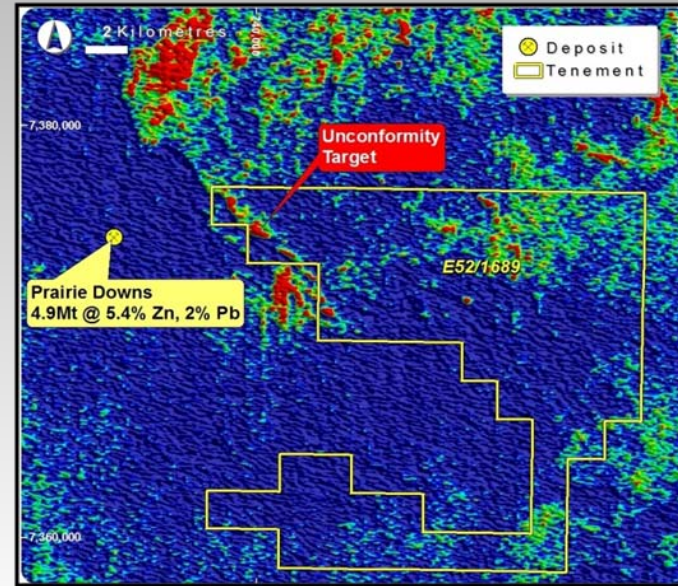


Sylvania Project

RGB radiometrics



Uranium channel

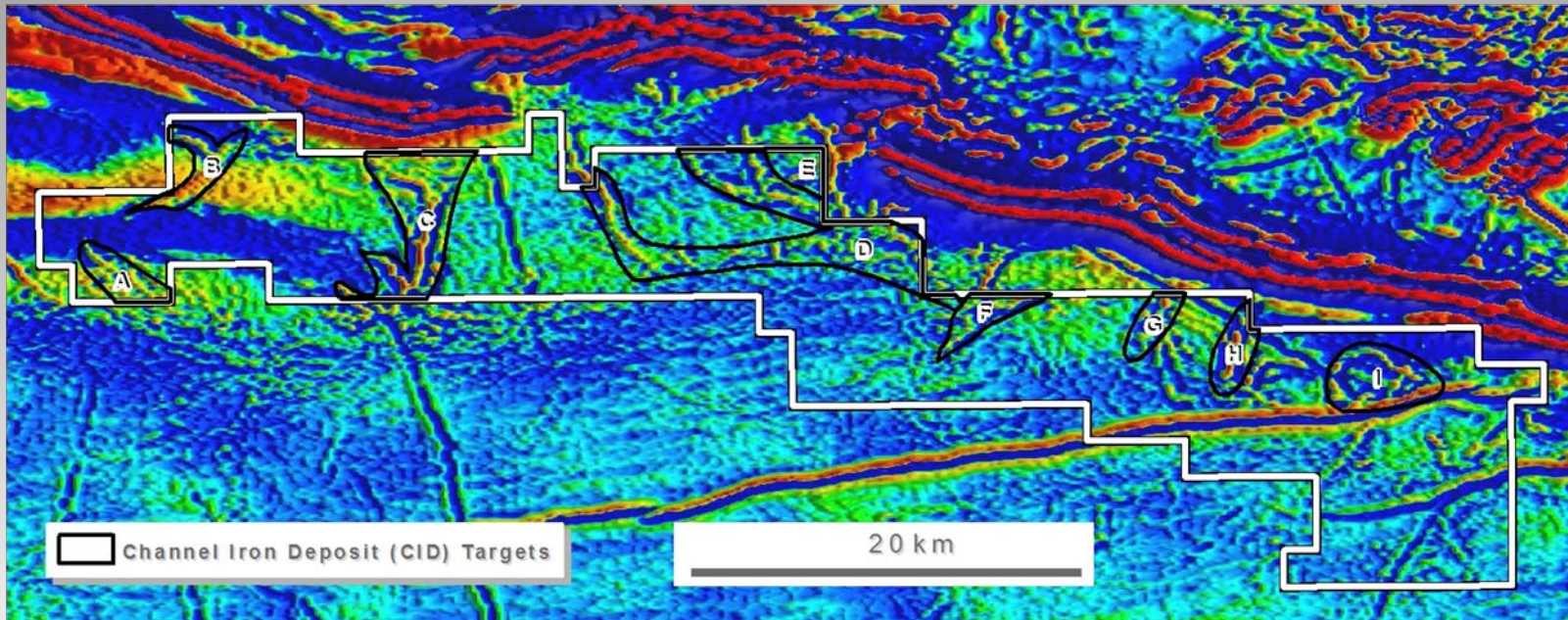


- Known uranium occurrences - SW Sylvania Dome
- Strong airborne radiometric response associated with unconformity
- Basal sediments Fortescue Gp –shear -chlorite schist
- Sandy Creek Well and Jillary Well U prospects
- Previous work by CRA/PNC - max 0.52% U₃O₈



Earaheedy Project

Magnetics

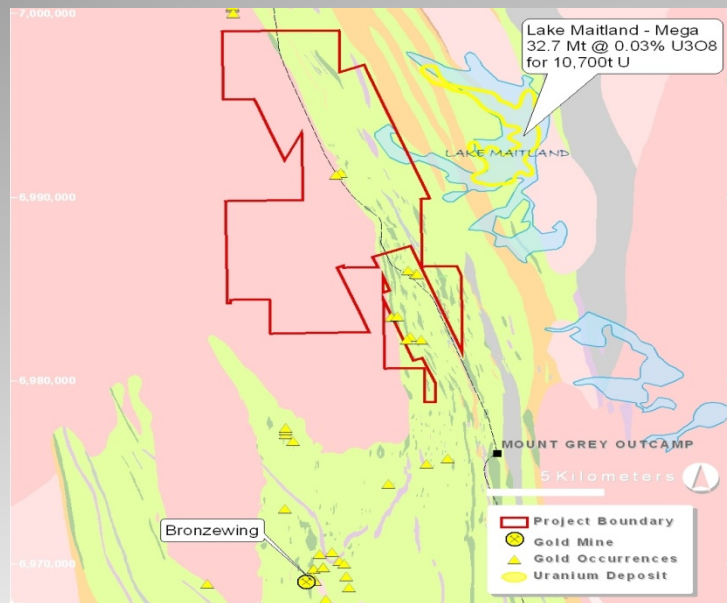


- Proterozoic Bif's in Nabberu Basin
- Potential for channel hosted iron ore deposits (CID)
- Tenement still in application, early stage

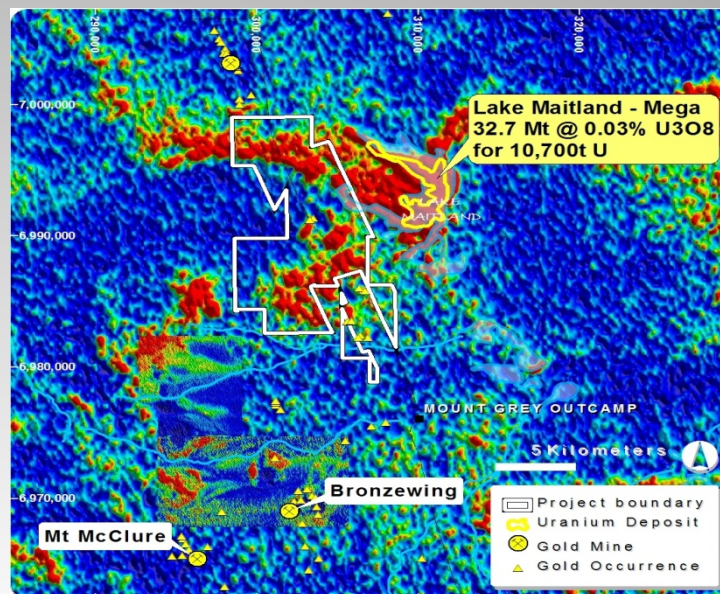


Maitland Project

Geology



Uranium Channel



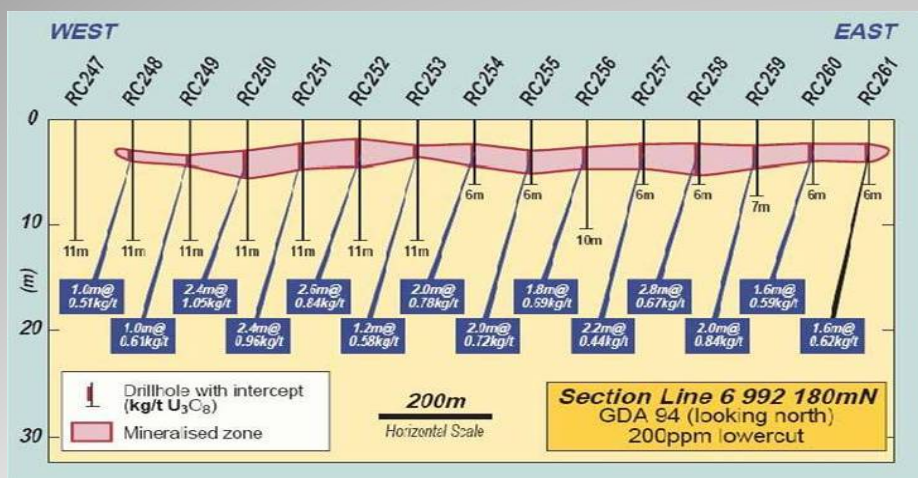
- 70% interest in “Uranium only” joint ventures with Mark Creasy
- Covers part of Lake Maitland drainage system over Archaean Yandal greenstone belt
- Calcrete hosted model, “Yeelirrie style”- buried
- Lies immediately west of known calcrete deposit
- Little previous drilling on Lake Maitland channel



Maitland Project

Lake Maitland – Mega Drilling

Lake Maitland – Mega Resource



Cut off Grade (ppm U ₃ O ₈)	Category	Quantity (tonnes @ 1.7 t/cu m)	Average Grade (ppm U ₃ O ₈)	Contained U ₃ O ₈ (tonnes)
500	Indicated	3,200,000	705	2,300
	Inferred	3,900,000	704	2,800
	Total	7,100,000	704	5,100
200	Indicated	4,890,000	593	2,900
	Inferred	10,300,000	483	5,000
	Total	15,190,000	518	7,900

Drill intercepts and Resource estimates taken from
Mega Uranium's Lake Maitland tenements
NOT

Revere Mining (Enterprise) Maitland Tenements

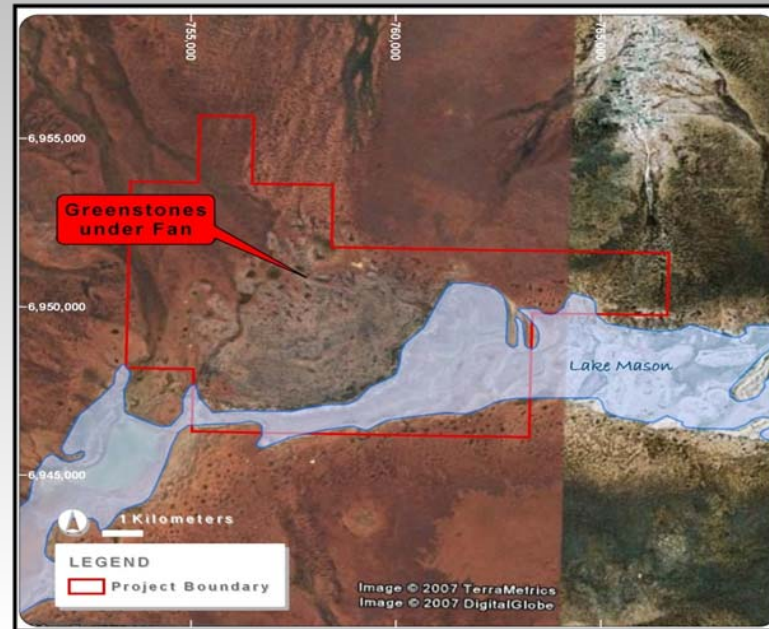
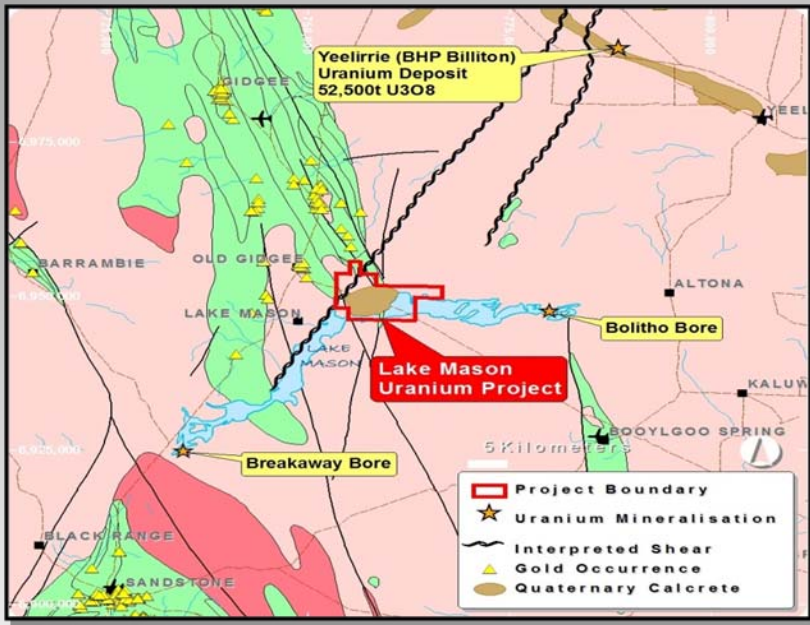
For personal use only



Lake Mason Project

Similar source rocks to Yeelirrie

Target is Calcrete Fan Delta (chemical trap)

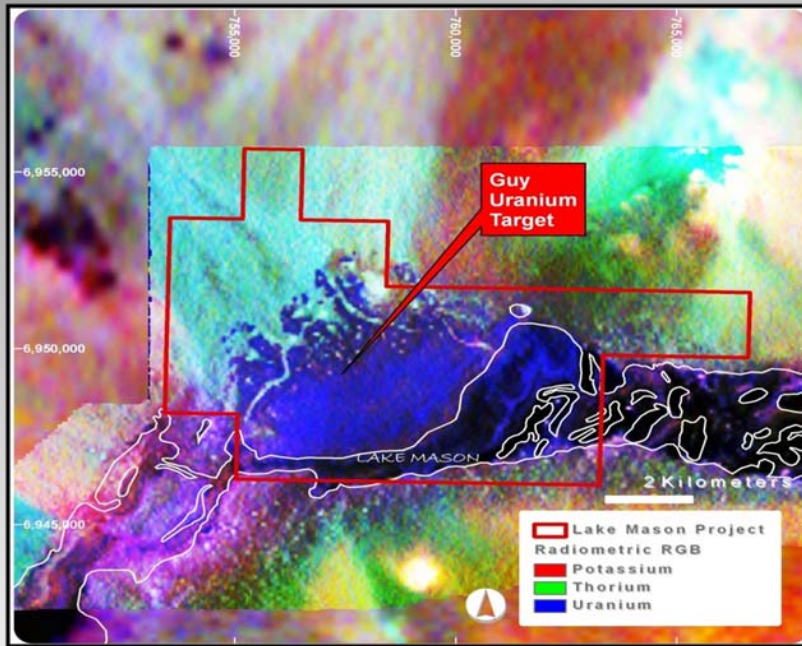


- Main target occurs on bend in Lake Mason drainage system
- Overlies Archaean Gum Creek greenstone belt
- Calcrete hosted model, "Yeelirrie style"
- Lies between 2 known calcrete deposits
- No previous drilling on this Lake Mason target

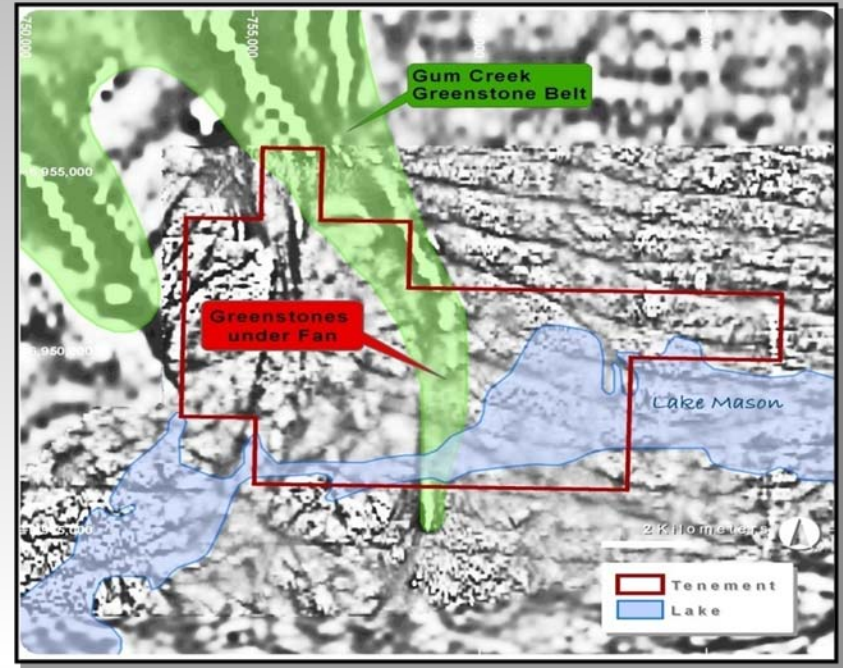


Lake Mason Project

Calcrete Fan Delta Target



Magnetics



- Detailed radiometrics shown anomalous uranium in calcrete “fan delta”
- Overlies southern tail of Archaean Gum Creek greenstone belt (mafic source of calcrete and vanadium)

For personal use only



REVERE IS READY TO GO

People, Projects and Access to Drill Rigs



For personal use only