

# REVERE MINING LTD

ACN: 123 567 073

Technical Presentation Following  
Annual General Meeting  
28 November 2008

“A new company, a new  
**ENTERPRISE...**”

## Disclaimer

**This document has been prepared by Revere Mining Ltd (“Revere” or “the Company”) to provide an update of the Company to investors and potential new shareholders. This presentation should be read in conjunction with other public announcements and reports (including financial reports and disclosure documents) released by Revere. Any statements, opinions, projections, forecasts or other material contained in this document do not constitute any commitments, representations or warranties by Revere and associated entities or its directors, agents and employees. Except as required by law, and only to the extent so required, directors, agents and employees of Revere shall in no way be liable to any person or body for any loss, claim, demand, damages, costs or expenses of whatsoever nature arising in any way out of, or in connection with, the information contained in the document.**

**This document includes certain statements, opinions, projections, forecasts and other material, which reflect various assumptions. The assumptions may or may not prove to be correct. Recipients of the document must make their own independent investigations, consideration and evaluation of the opportunity to invest in the Company. By accepting this document the recipient agrees that if it proceeds further with its investigations, consideration or evaluation of the opportunity to invest in the Company it shall make and rely solely upon its own investigations and inquiries and will not in any way rely upon the document.**



# CORPORATE OBJECTIVE

*“Increase Shareholder Value.....”*

How:

Discovery and/or acquisition under safe title  
of  
large & highly profitable

World Class Mineral Deposits (Orebodies)



# CORPORATE STRUCTURE

Issued Capital:	75.5765 M shares
Options:	2.0 M @ 25 cents (31/12/09) 1.5 M @ 25 cents (22/11/12) 1.5 M @ 25 cents (30/11/12) 2.5 M @ 50 cents (30/06/13)
Share price (close 27 Nov 08)	\$0.09
Market Capitalisation:	\$6.80 million
Cash at bank:	\$2.3 million @ 30 Sept 2008



# STRONG MANAGEMENT TEAM

## Paul Larsen - Non Executive Chairman

- Successful private company director
- 26 years experience in construction, management & major projects

## Dermot Ryan - Managing Director FAusIMM, CP (Geo)

- Geologist with 31 years multi-commodity experience
- 20 years CRA Ltd inc. 10 years as Chief Geologist CRA Exploration
- 5 years Great Central Mines, GM Expl. Jundee, Bronzewing, Wiluna

## Bruce Hawley - Executive Director FAusIMM, CP (Management)

- Chemical engineer with 35 years experience in mining projects
- Specialist project management, development & construction phases

## Peter Del Fante - Non Executive Director

- 19 years experience in exploration & mining tenement management



# EXPLORATION EXPERTISE

“available on demand”

## GEOLOGISTS

- Neil Provins
- Hugh Bunge
- Steve Hart
- Mike Kammermann
- Vic Williams
- Frank Doedens
- Huw Clarke
- Matt Styles

## GEOPHYSICISTS

- Bill Robertson
- Geoff Garton

## GEOCHEMIST

- Oliver Robertson

## DATABASE/GIS SPECIALISTS

- Peter Litic
- Brett Scott
- Tanya O’Dea



# GOLD-URANIUM-IRON

## Gold

- Darlot
- Revere
- Wattagee
- Yalgoo
- Mt Gibson

## Uranium

- Maitland
- Lake Mason
- Darlot
- Sylvania
- Wongan



## Iron Ore

- Sylvania
- Earraheedy
- Fraser Range

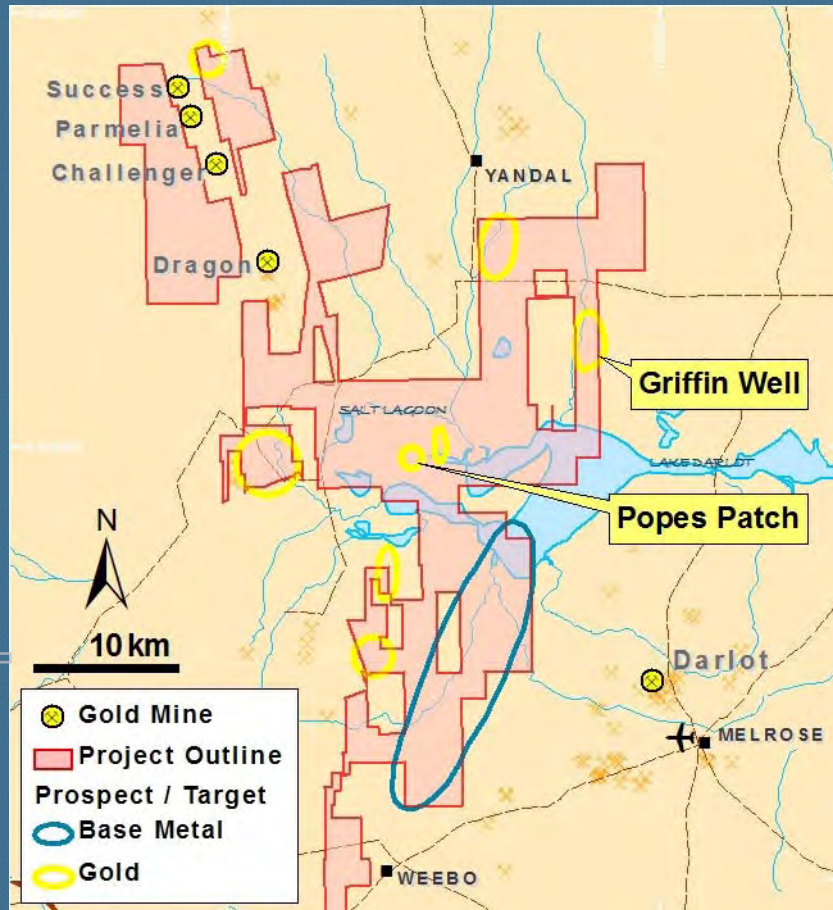


# Darlot Project

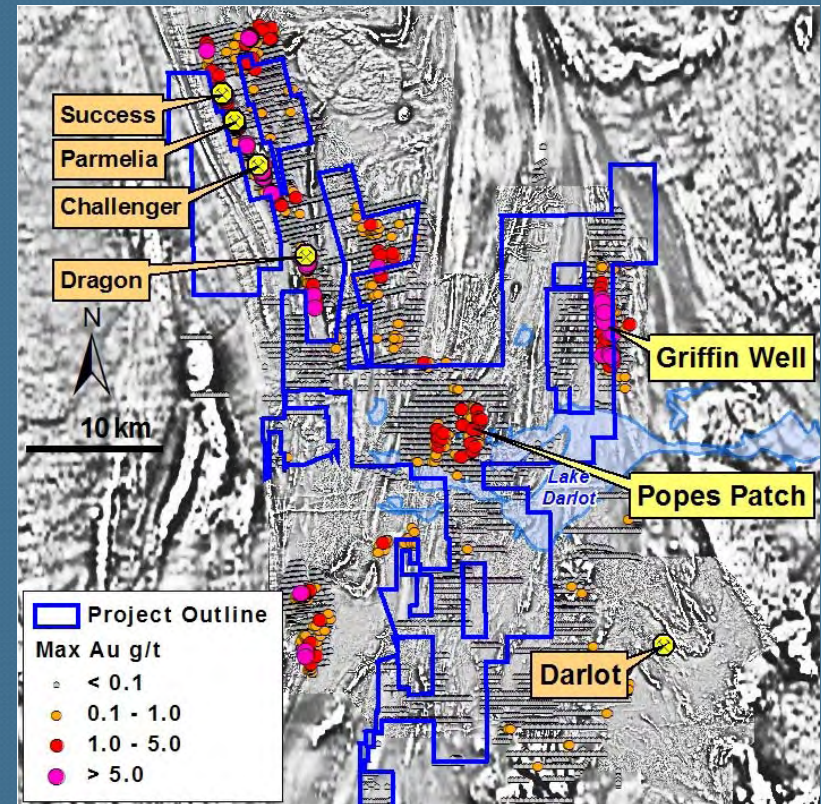
(100% \*)

Au

Gold and Base Metal targets



Historic Gold drilling results on magnetics



- Under-drill tested compared to similar situations
- Excellent gold/base metal targets based on previous RAB drilling & structural interpretation

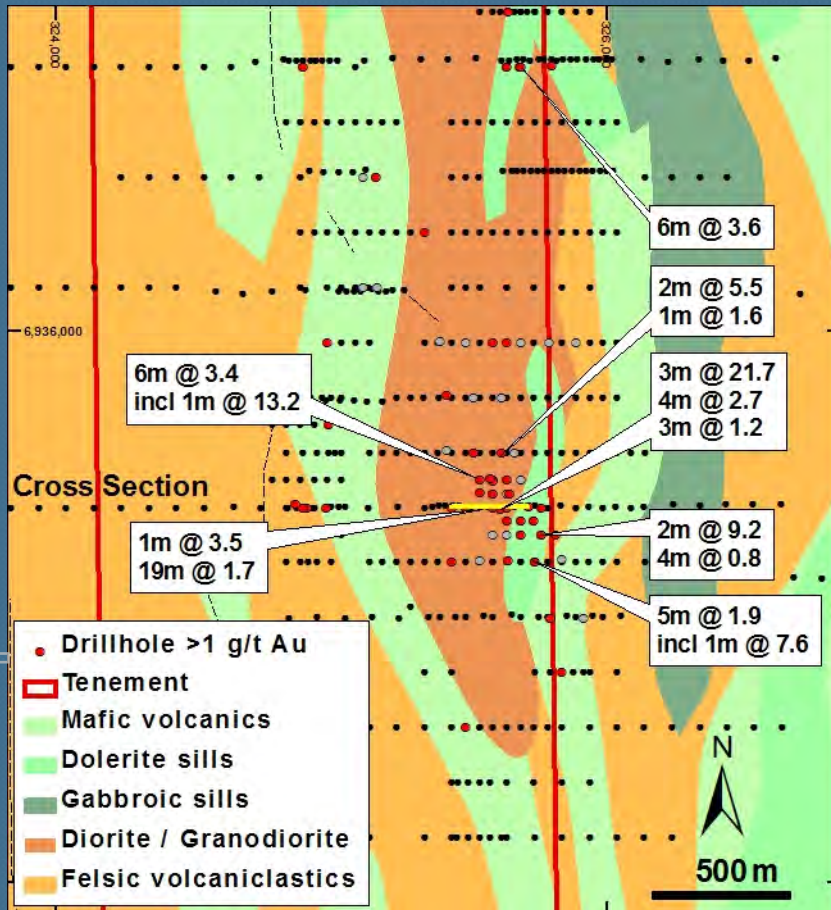
\* one tenement 80% owned



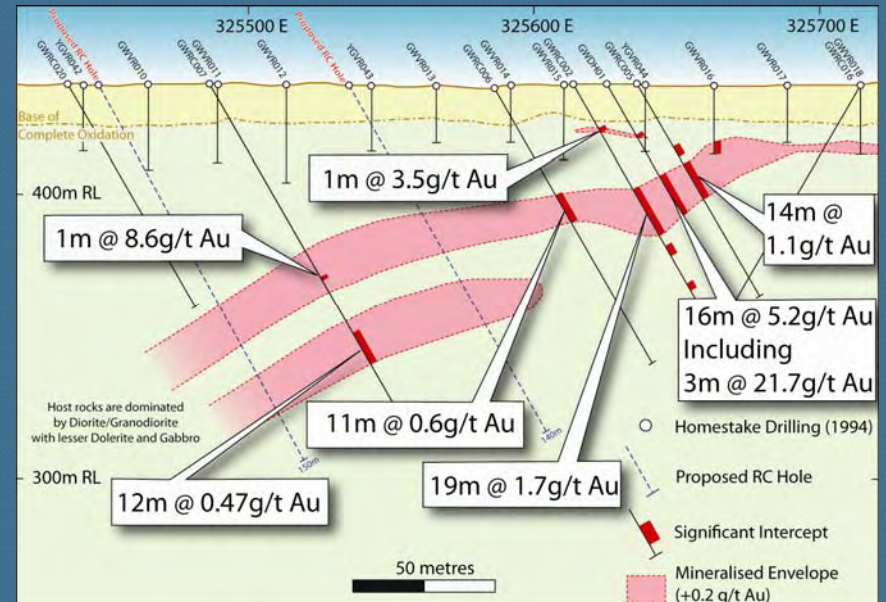
# Darlot Project

Au

Griffin Well gold target



Griffin Well cross section



Target: Structurally controlled orogenic gold deposit

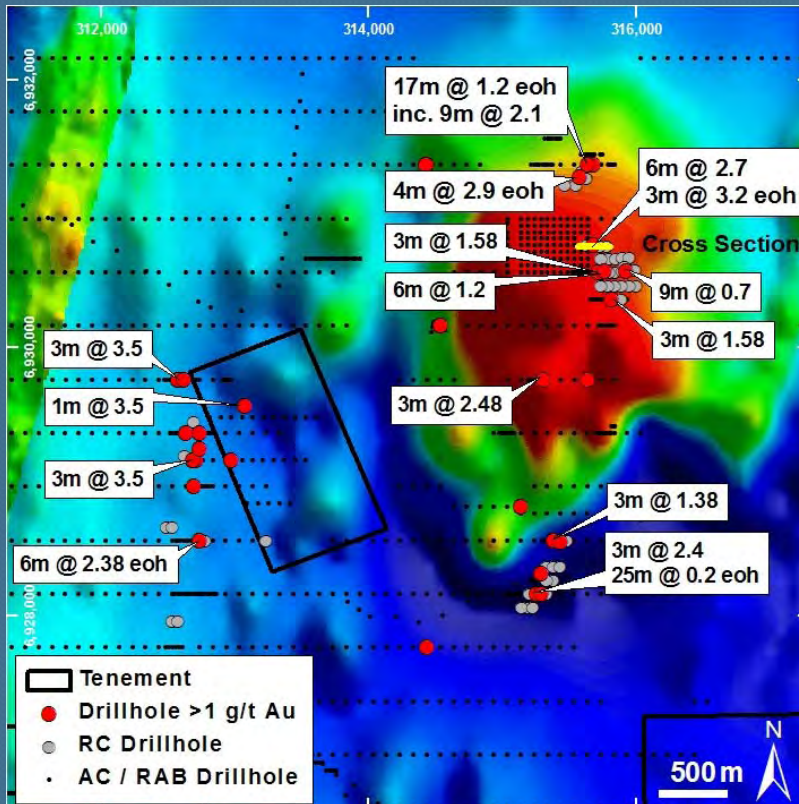
- Historical drilling with limited follow up
- Oblique mineralised structure not fully tested
- RC follow up drilling planned ( POW submitted)



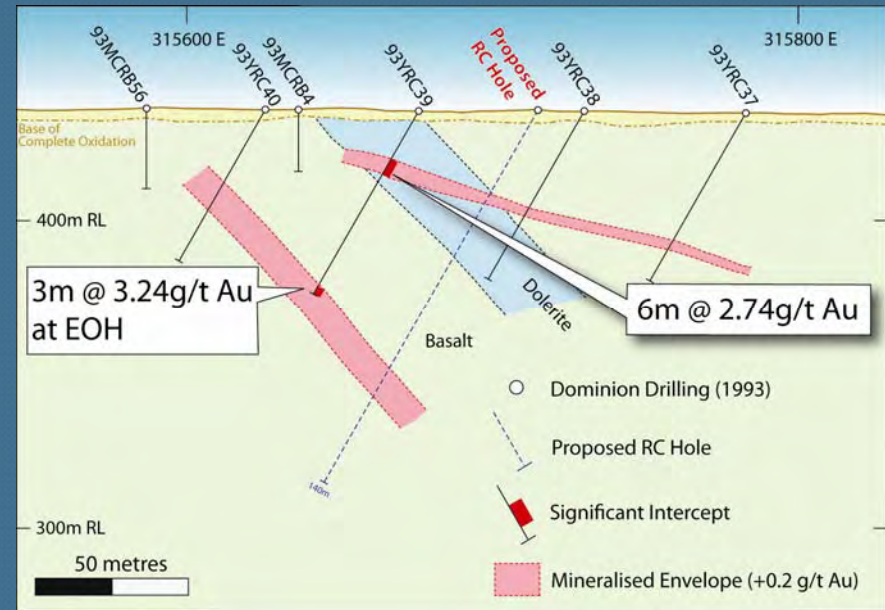
# Darlot Project

Au

Popes Patch gold target



Popes Patch cross section



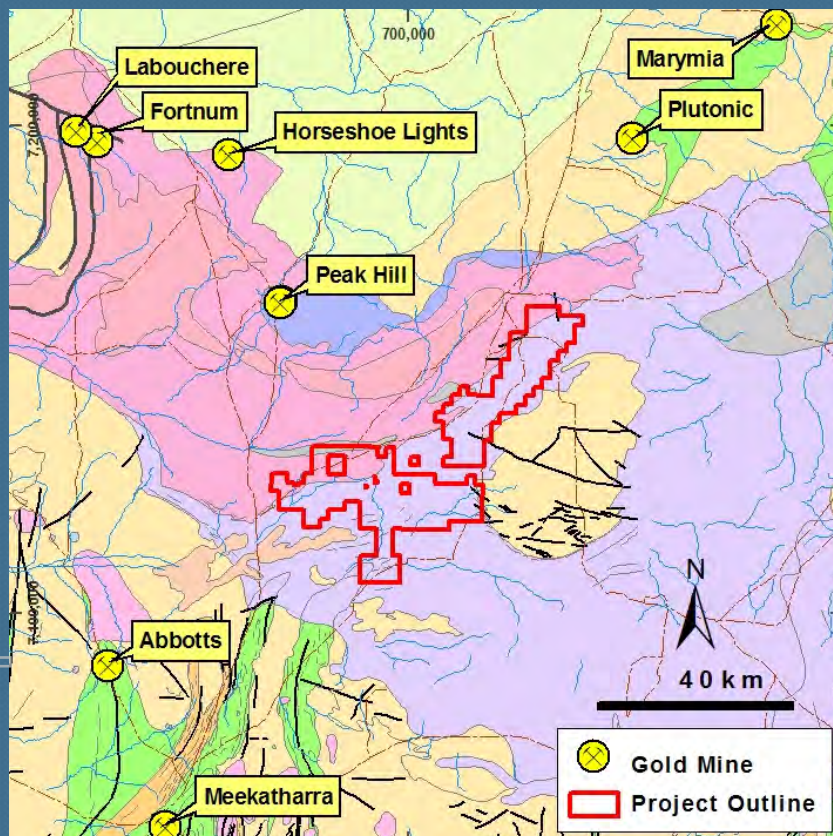
- Historical drilling with limited follow up
- 1,500m x 1,500m gold system
- Excellent gold targets based on structure/ RAB



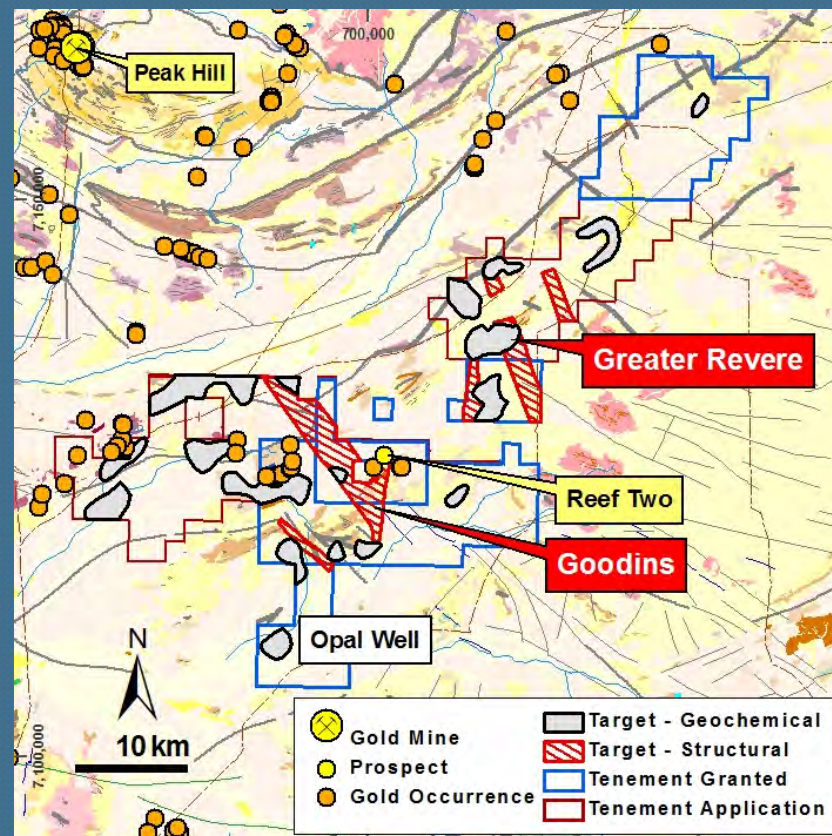
# Revere Project (100%)

Au

Geology



Targets



Target: Sediment hosted stockwork gold deposit

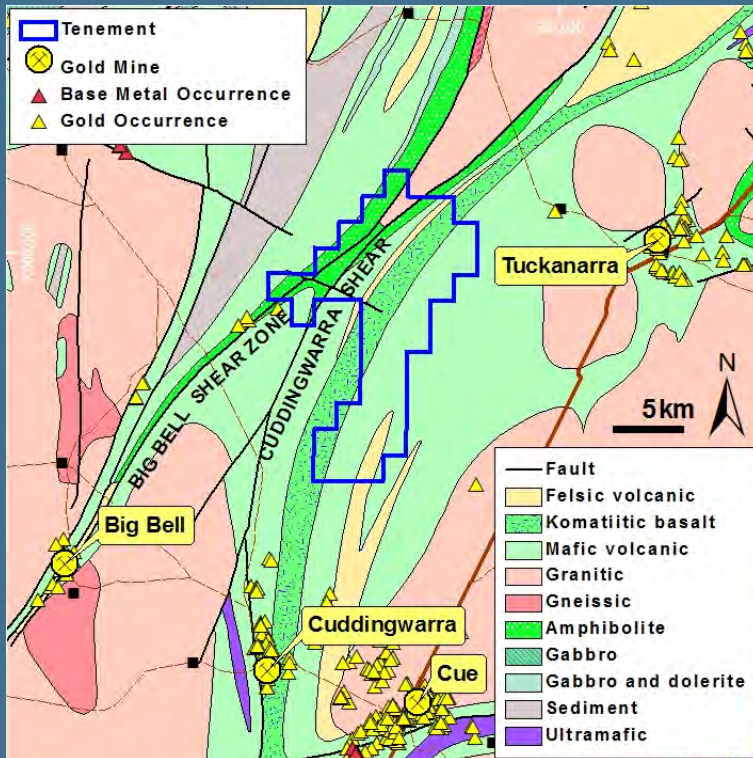
- Thin Proterozoic sedimentary sequences overlying Archaean greenstones
- Geochemical and structural targets identified for drill testing (POW submitted)



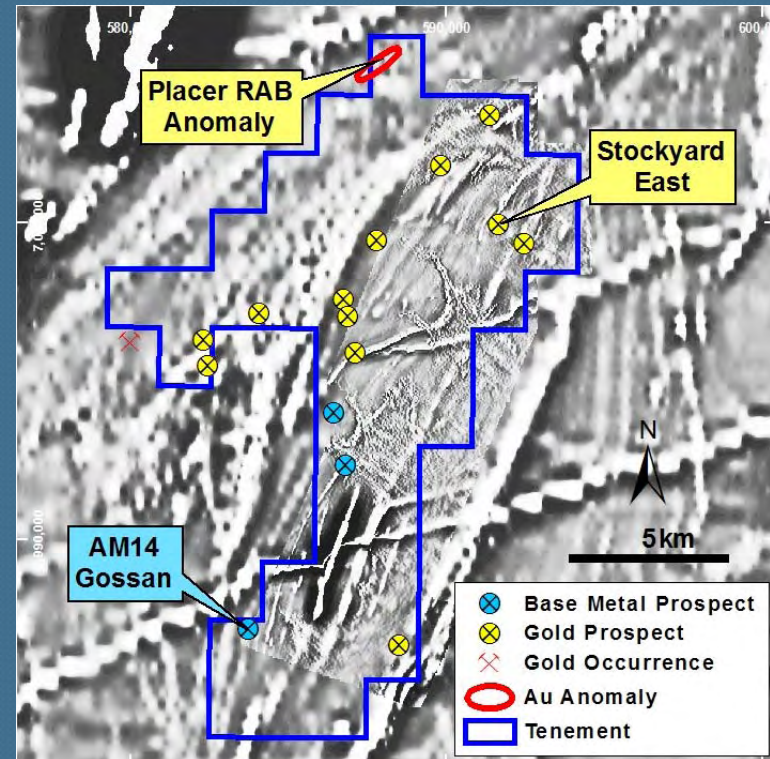
# Wattagee Project (100%)

Au, BM

## Geology



## Magnetics and Prospects



## Targets: Archaean orogenic Au deposit & VMS Cu/Zn deposits

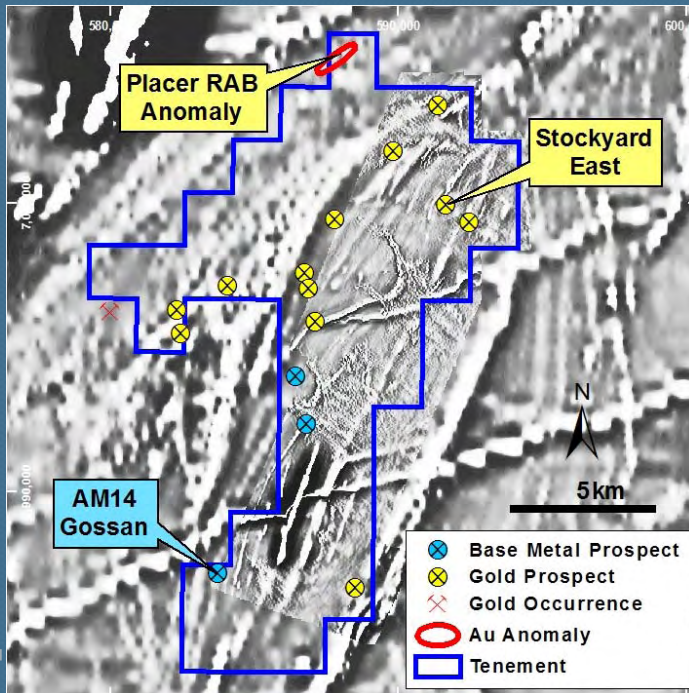
- Covers 143 km<sup>2</sup> prospective Archaean greenstone & felsic volcanics
- “Big Bell” style conceptual targets for gold along Cuddingwarra Shear
- Early RC results encouraging, eg. 4m @ 17.9g/t Au from 114m –Stockyard East



# Wattagee Project

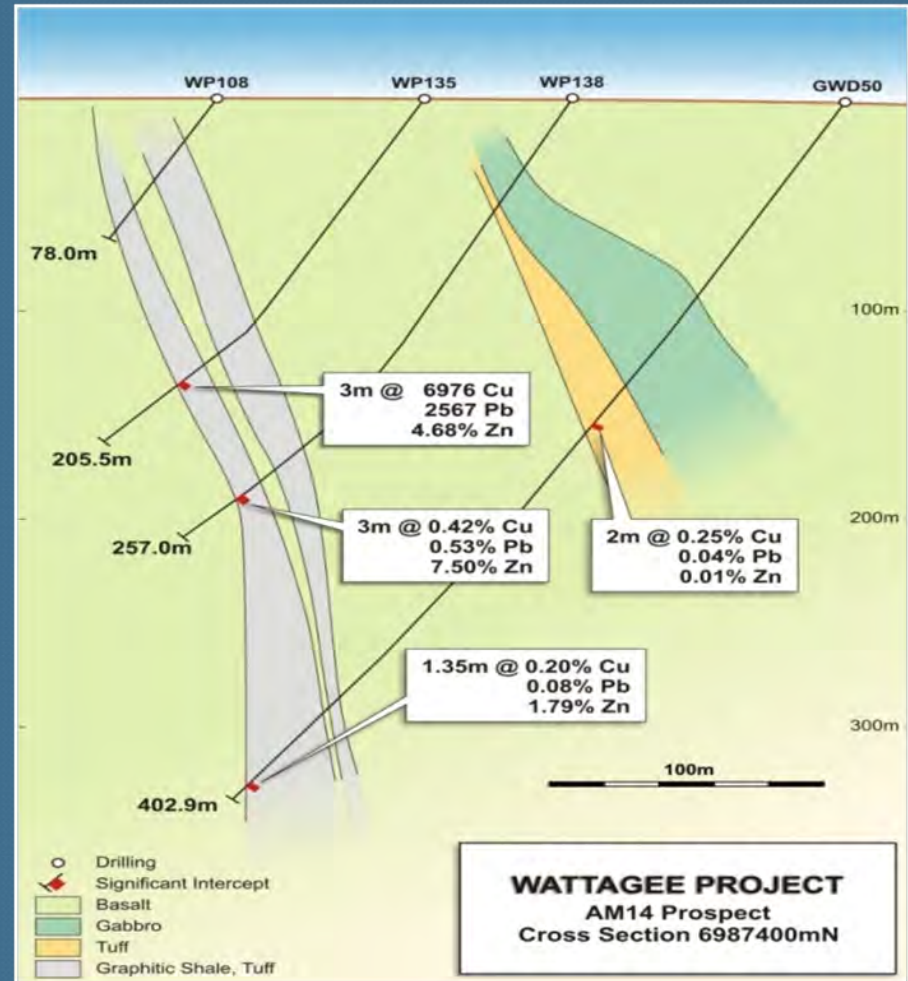
Au, BM

## Magnetics and Prospects



Historical RC results encouraging  
eg. 3m @ 7.5% Zn,  
Geophysics (IP) and RC drilling required.  
(POW submitted)

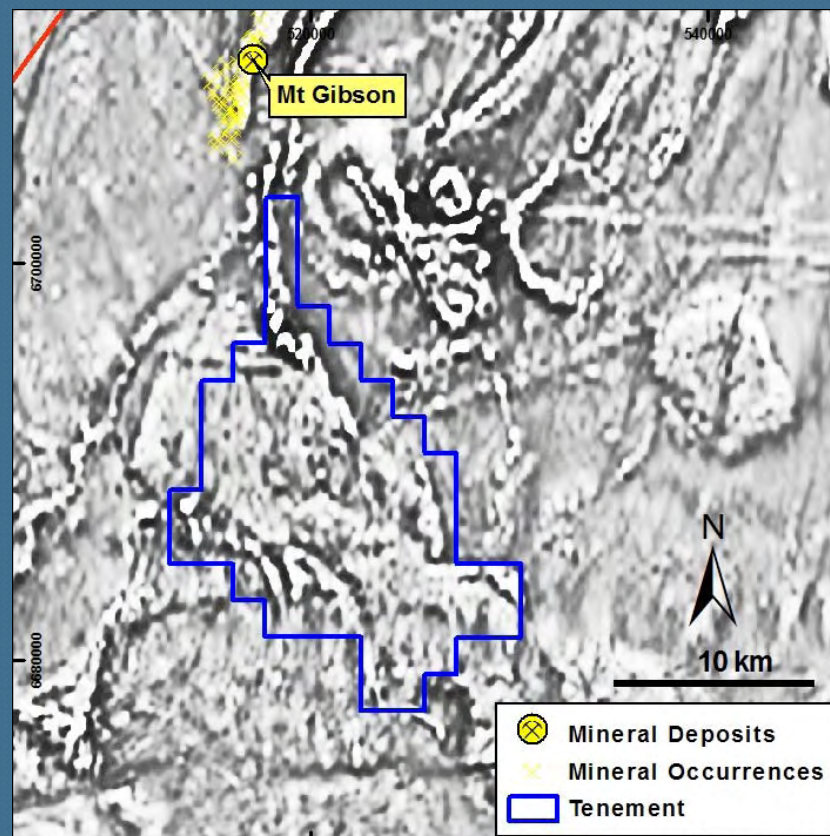
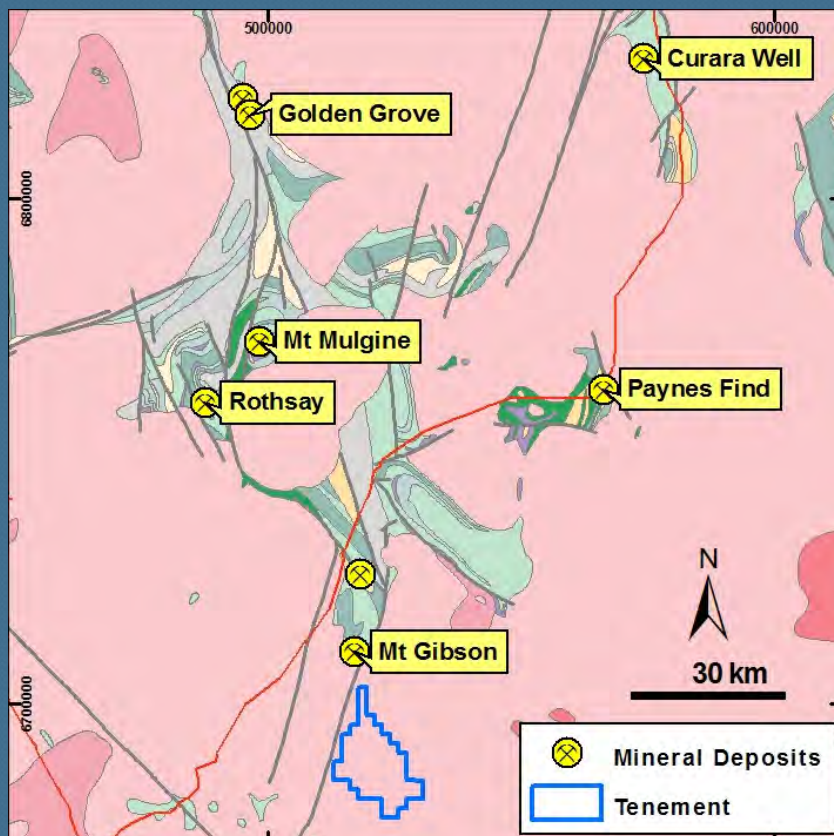
## AM 14 Base metal prospect





# Mt Gibson Project (100%)

Au

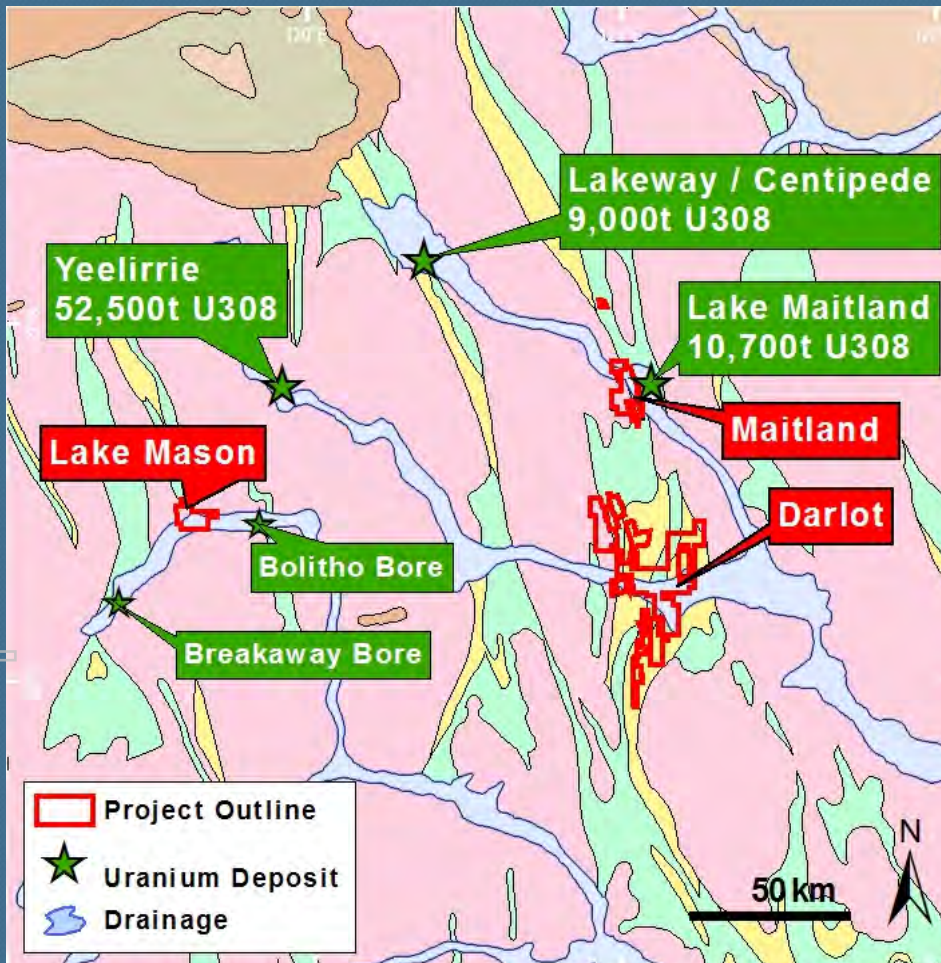


Targets: Archaean orogenic Au deposit & VMS Cu/Zn deposits

- Major intersecting structures, immediately south of Mt Gibson gold mine
- No previous drilling



# Yilgarn Uranium Resources & Projects



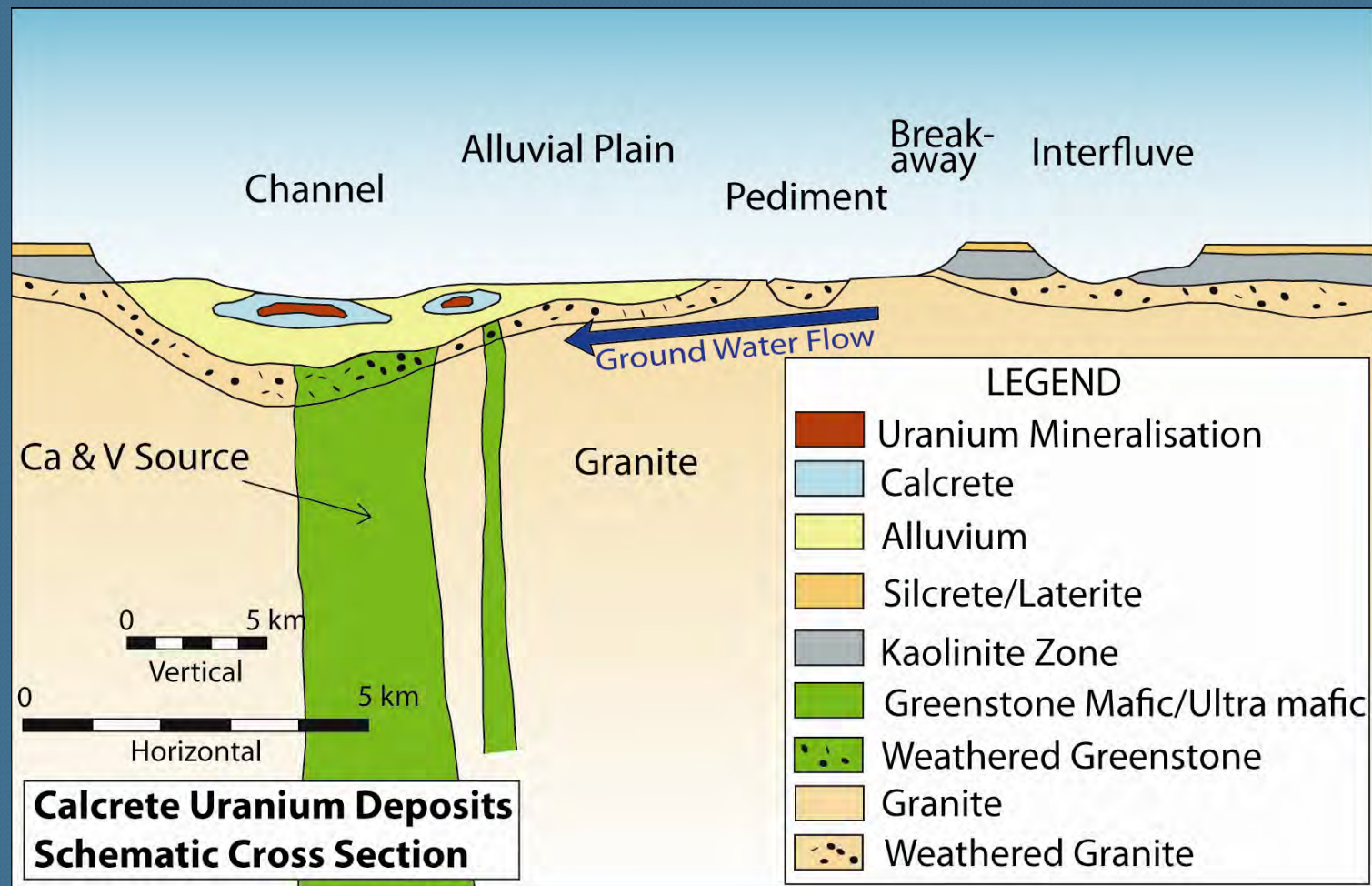
## Calcrete hosted uranium deposits

- Soluble Uranium sourced from granites
- Uranium (carnotite) precipitated in calcrete over greenstone belts after addition of Ca and V.



# Yilgarn Uranium Resources & Projects

For personal use only

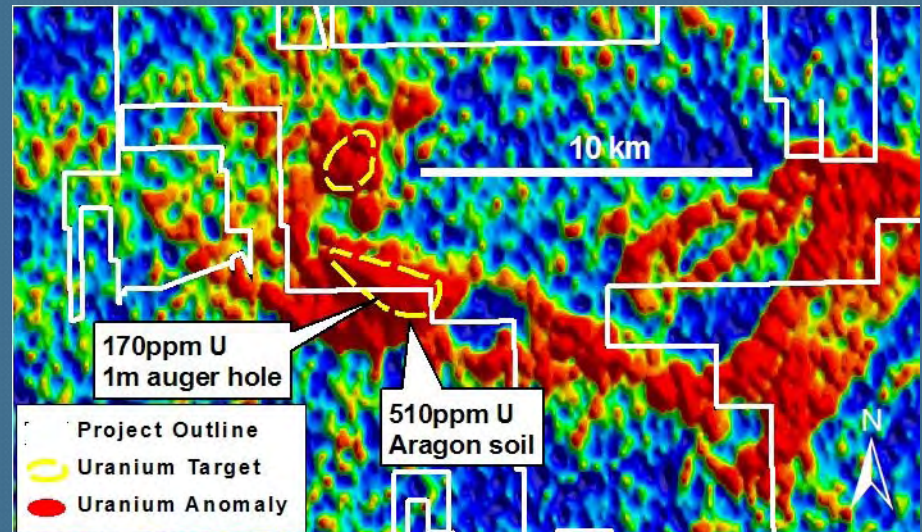
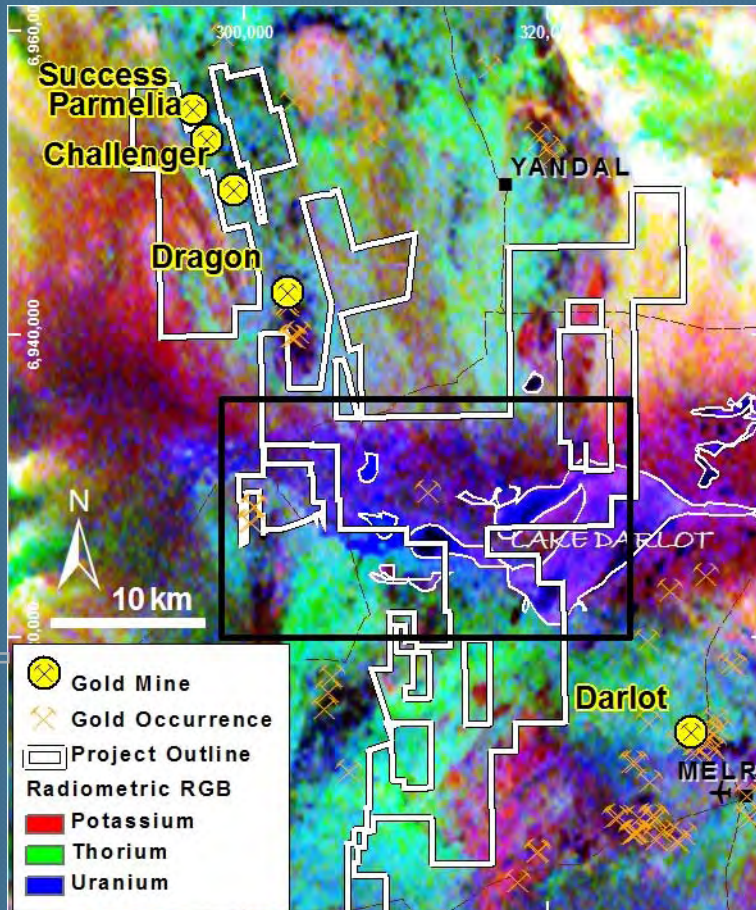




# Darlot Project

(100%)

U



Target: Calcrete hosted uranium, "Yeelirrie style"

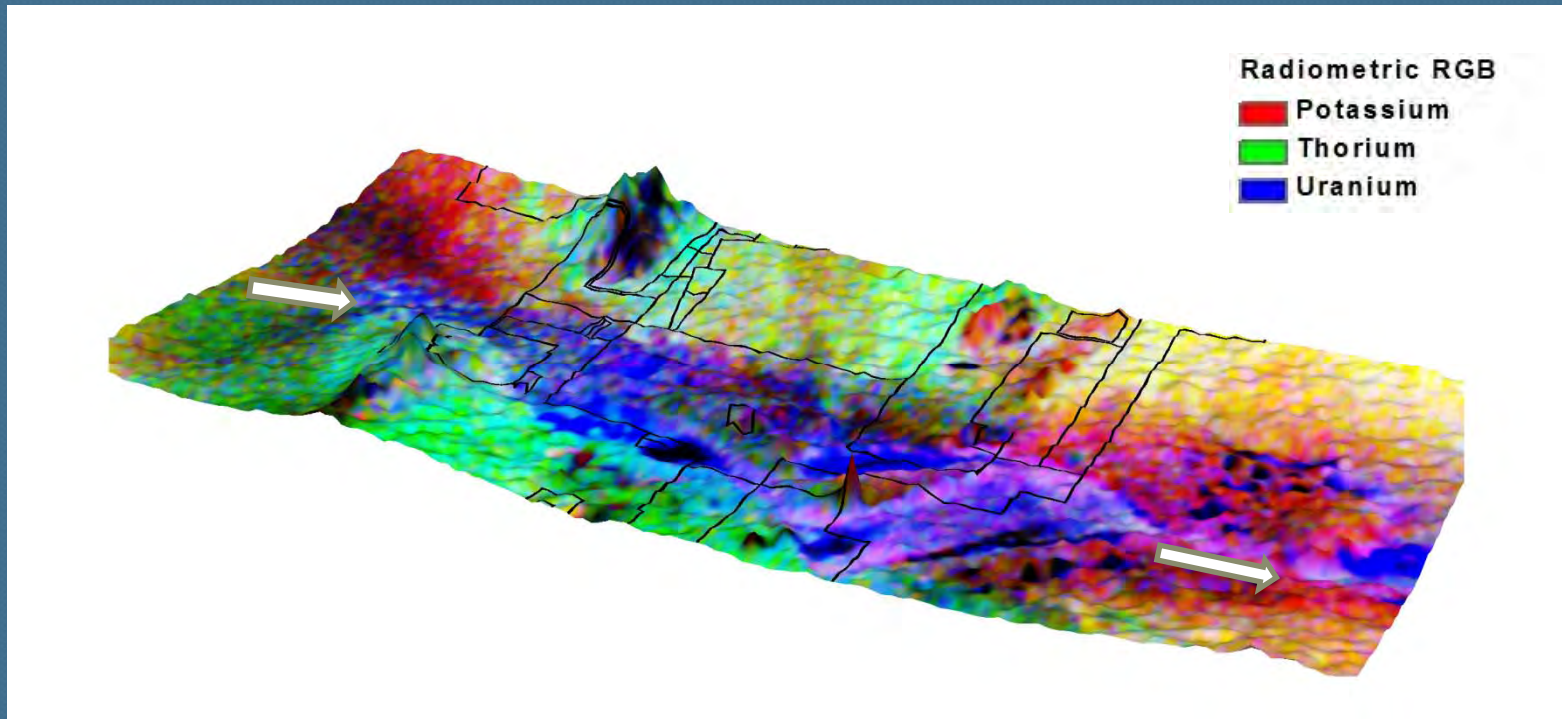
- Downstream from BHPB's Yeelirrie, 52,500t  $U_3O_8$
- Strong evidence in GSWA radiometric data
- Little previous drilling on Lake Darlot itself



# Darlot Project



*RGB radiometrics on Topography*



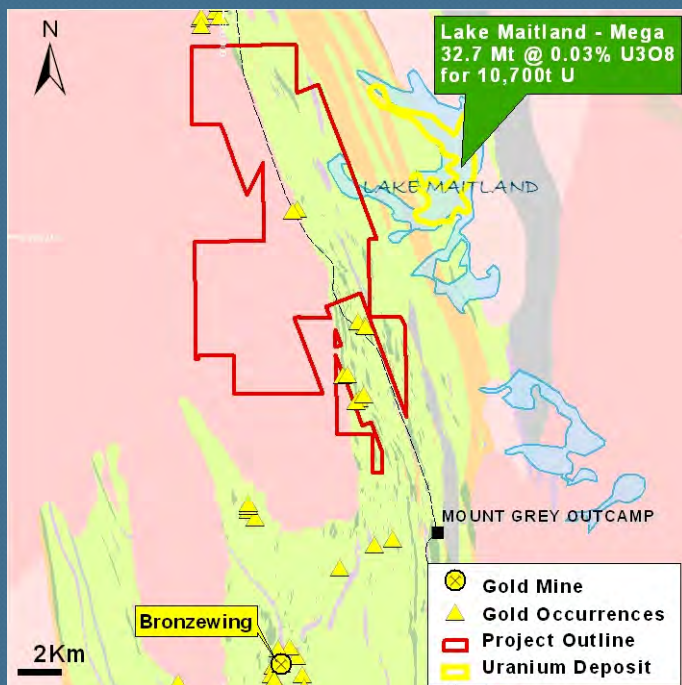
*Looking north , across Lake Darlot*



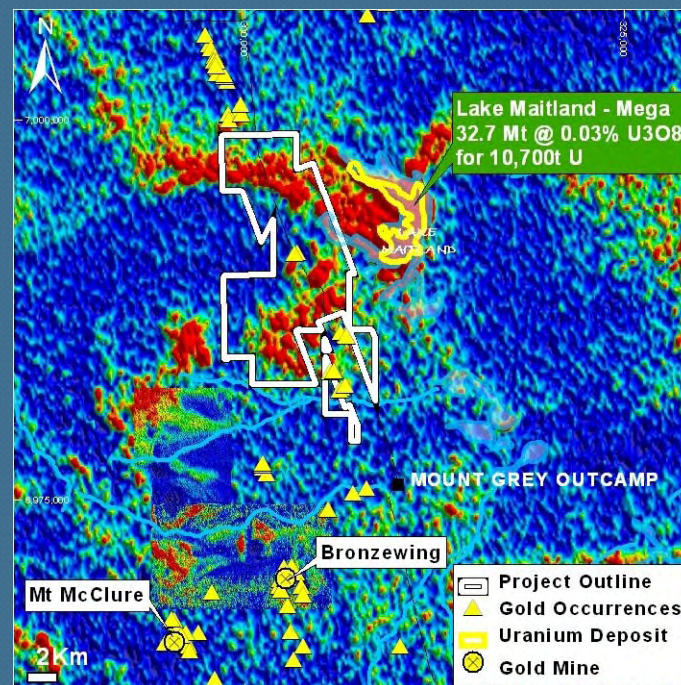
# Maitland Project (70%, uranium only)



Geology



Uranium Channel



## Target: Calcrete hosted uranium, "Yeelirrie style"

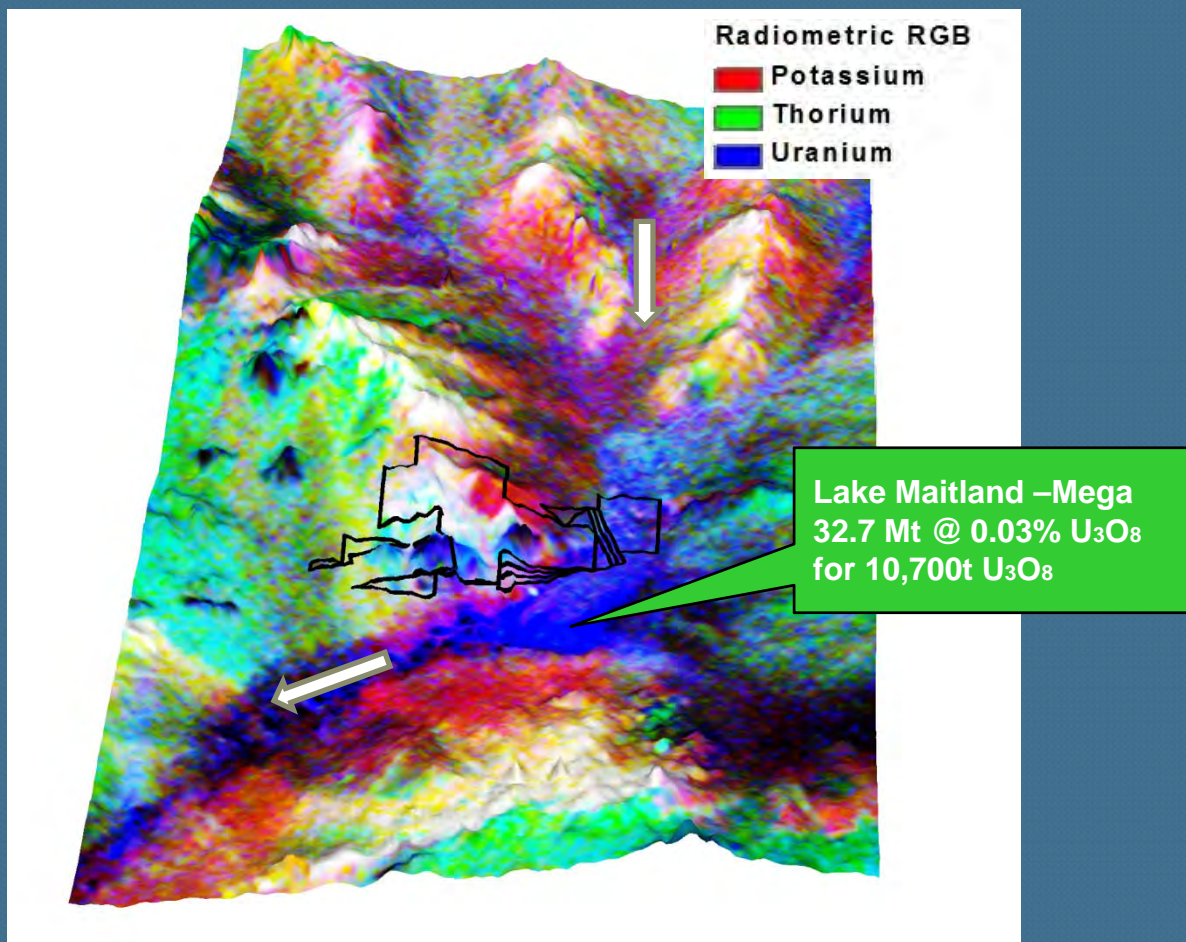
- 70% interest in "Uranium only" joint venture with Mark Creasy
- Covers part of Lake Maitland channel over Yandal greenstone belt
- Lies immediately west of Mega Uranium's known calcrete deposit
- Little previous drilling for uranium on Lake Maitland channel



# Maitland Project



*RGB radiometrics on Topography*



*Looking west from Lake Maitland, upstream*

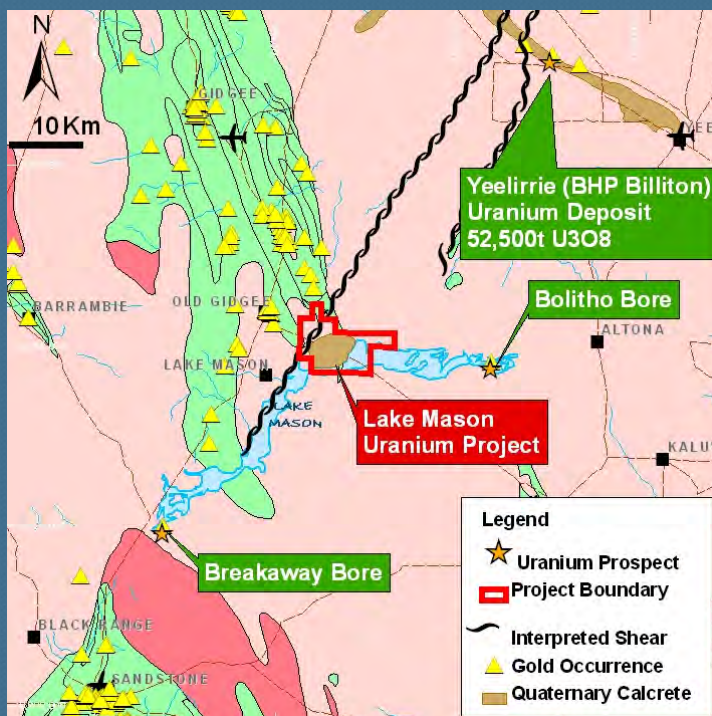


# Lake Mason Project

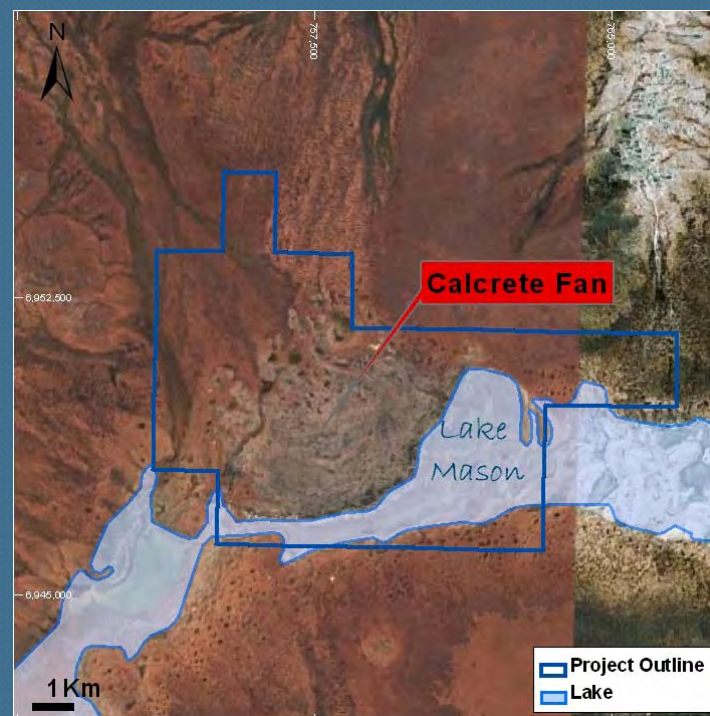
(100%)



*Similar source rocks to Yeelirrie*



*Target is Calcrete Delta (chemical trap)*



Target: Calcrete hosted uranium deposit, “Yeelirrie style”

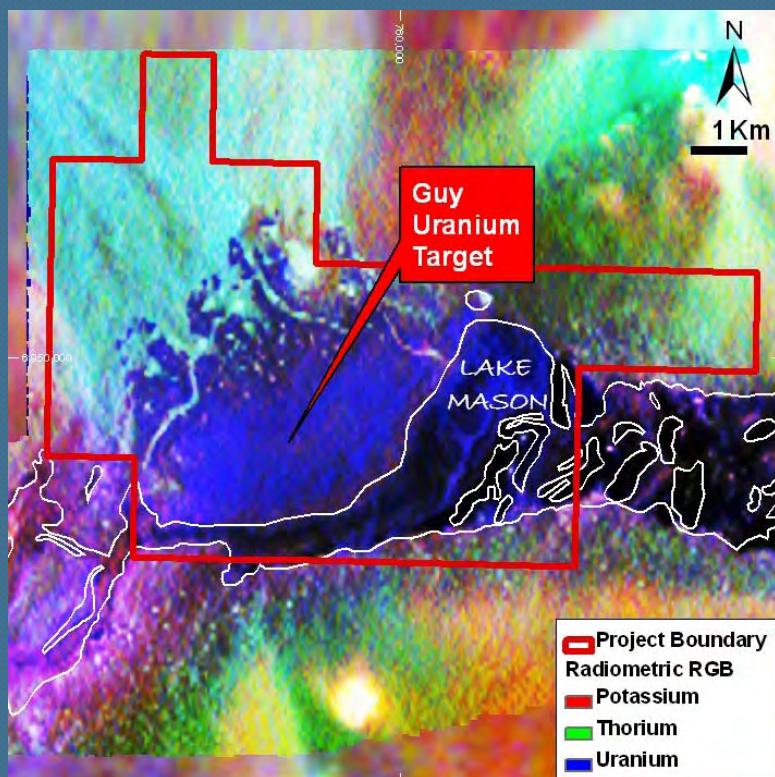
- Calcrete delta overlies Archaean Gum Creek greenstone belt
- Lies between 2 known calcrete deposits
- No previous drilling on this Lake Mason target



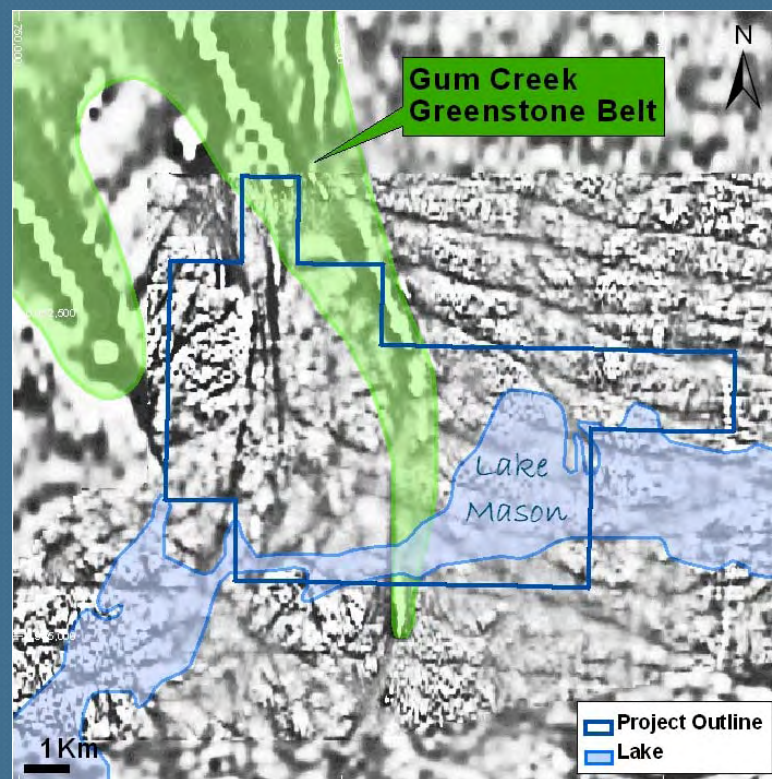
# Lake Mason Project



*RGB shows Uraniferous Calcrete Delta*



*Magnetics*



- Detailed radiometrics shown anomalous uranium in calcrete “delta”
- Overlies southern tail of Archaean Gum Creek greenstone belt
- Greenstones are source of Calcrete and Vanadium

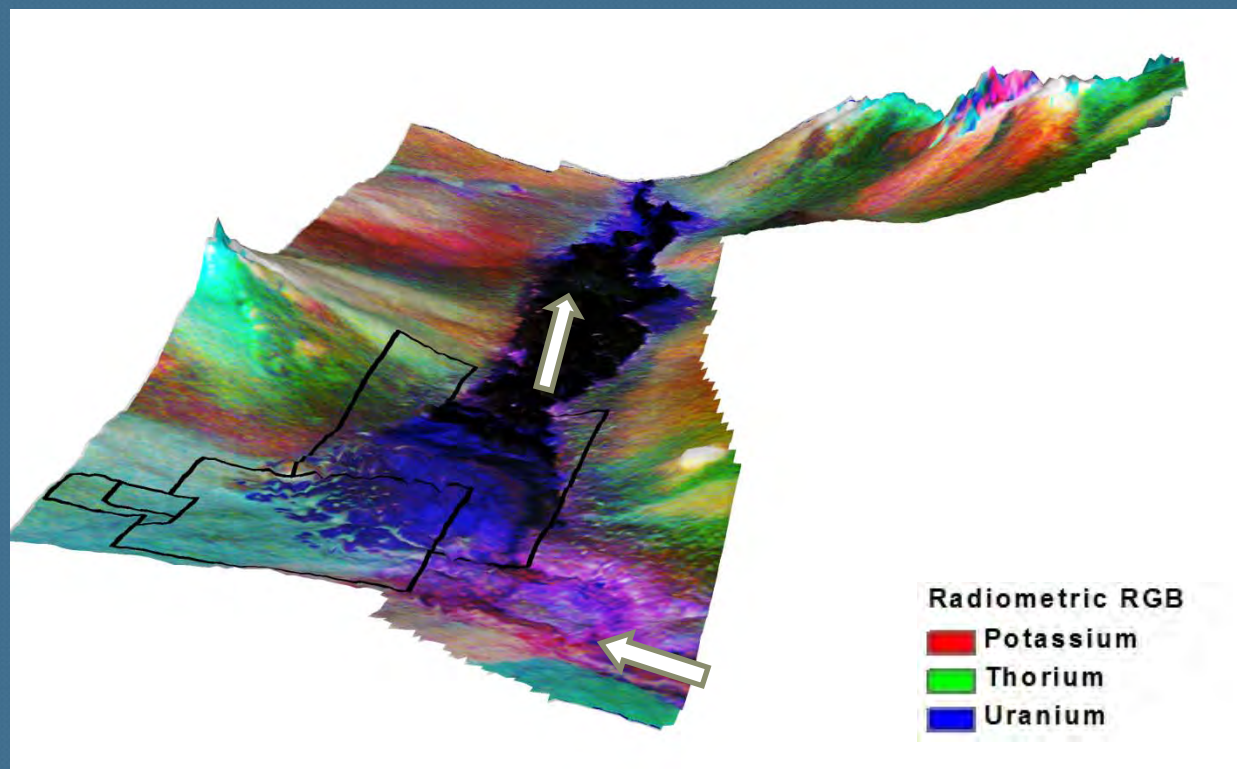


# Lake Mason Project

(100%)



*RGB radiometrics on Topography*



*Looking east , down Lake Mason*

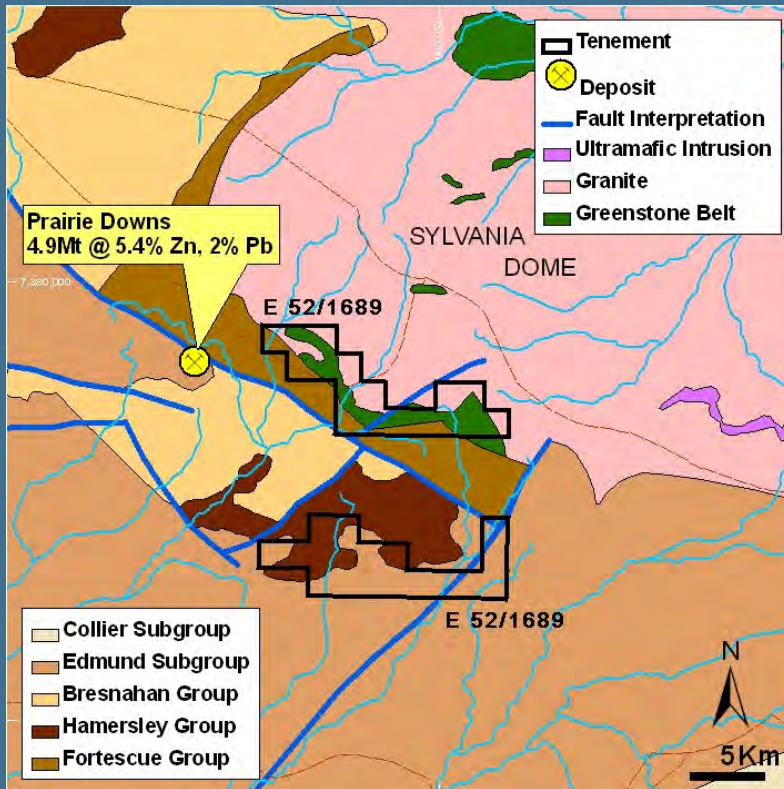
For personal use only



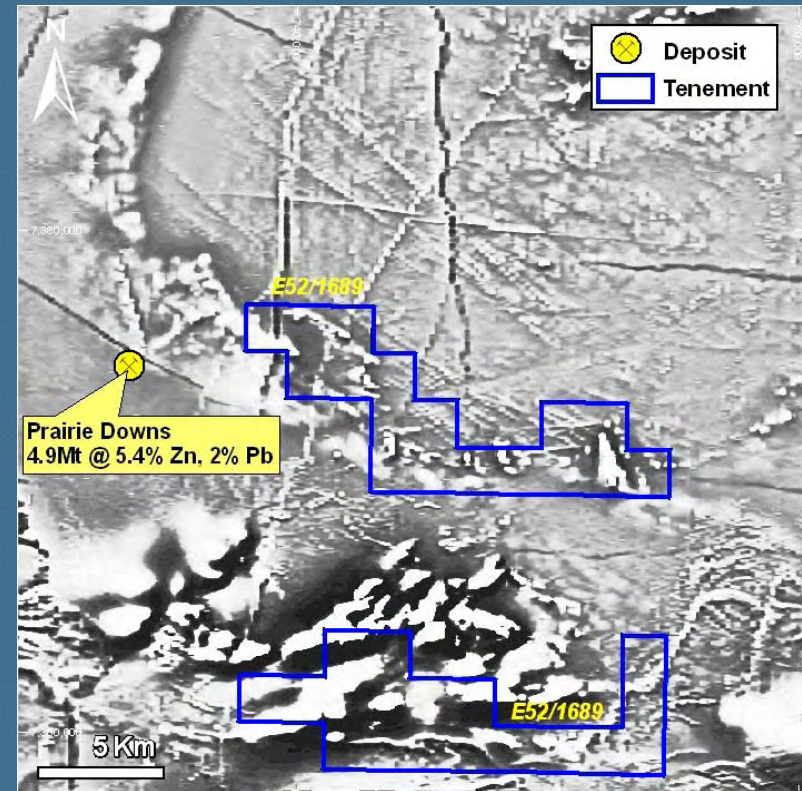
# Sylvania Project (100%)

Fe

Geology



Magnetics



Target: Proterozoic sediments - hematite iron deposit, "Hamersley style"

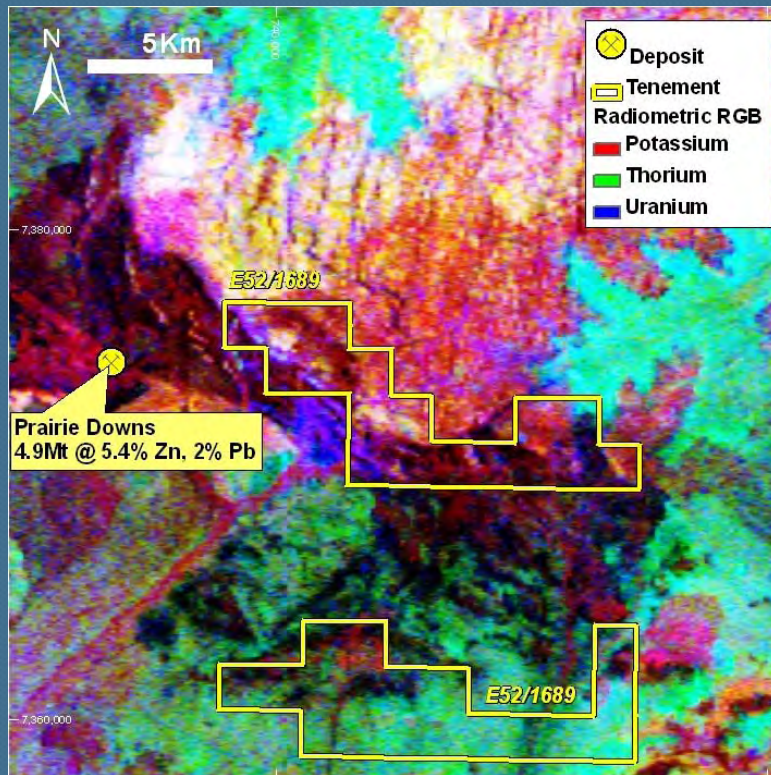
- Recent drilling in adjacent tenement by iron ore major in Brockman Iron Formation



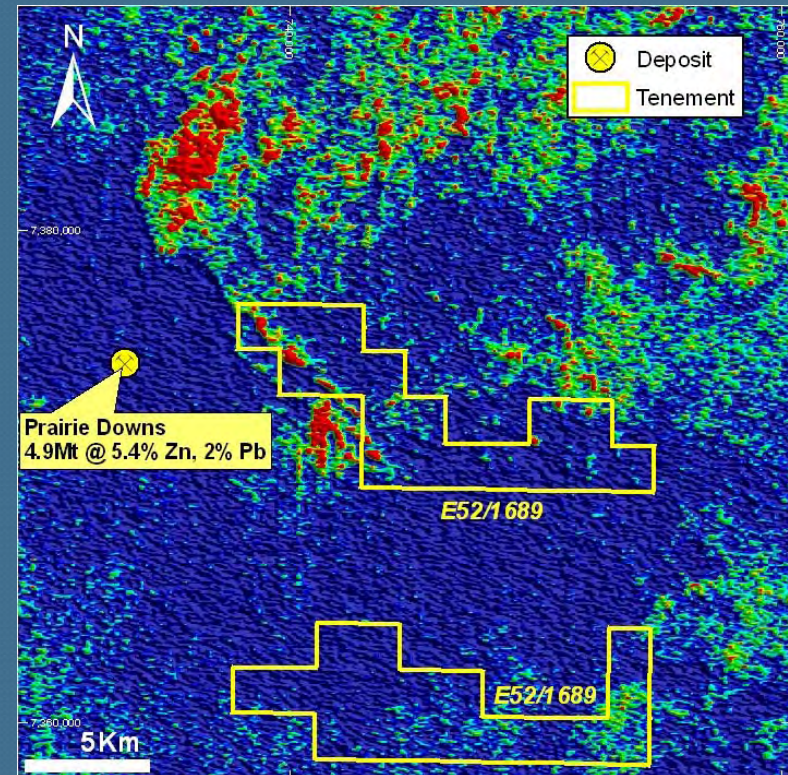
# Sylvania Project



RGB Radiometrics



Uranium Channel



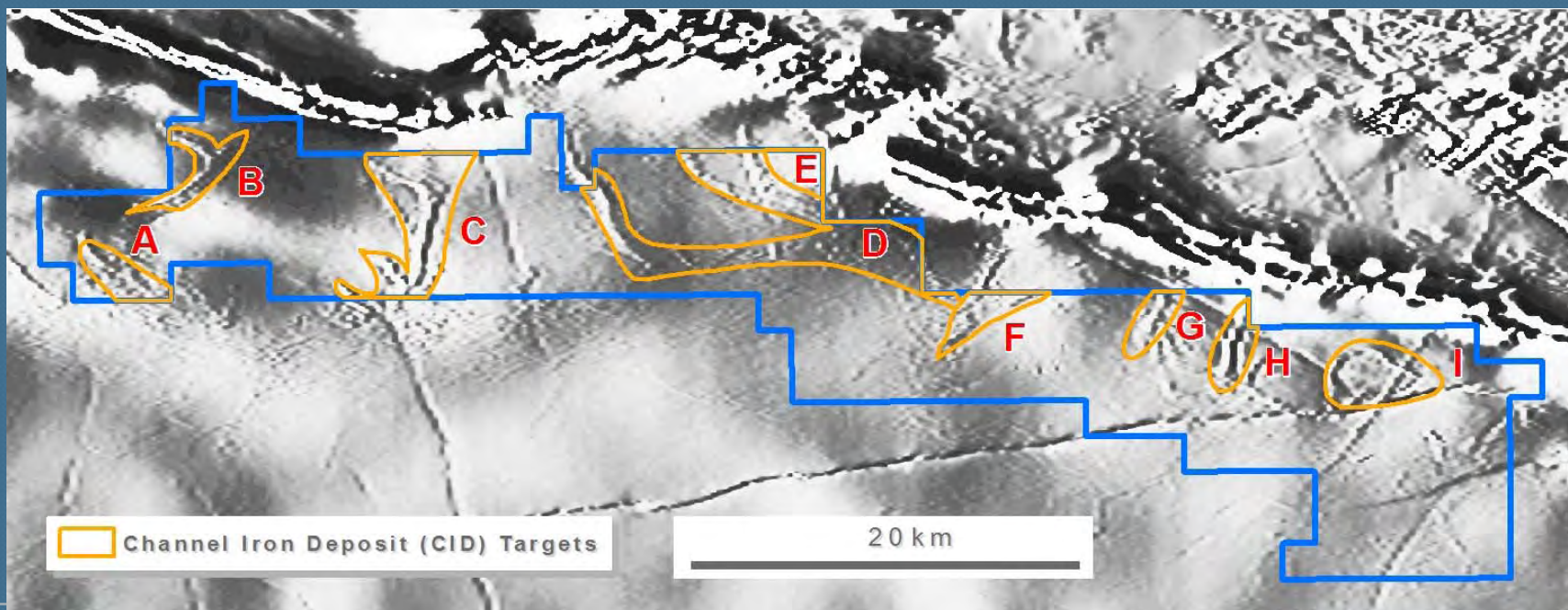
Target: Unconformity/shear hosted uranium deposit

- Uranium occurrences at unconformity, overlying Sylvania Dome granite
- Strong airborne radiometric response associated with unconformity
- Previous work by CRA/PNC - max 0.52% U<sub>3</sub>O<sub>8</sub> in calcrete



# Earaheedy Project (100%)

Fe



## Target: Channel Iron Deposit ("CID") in Proterozoic sediments

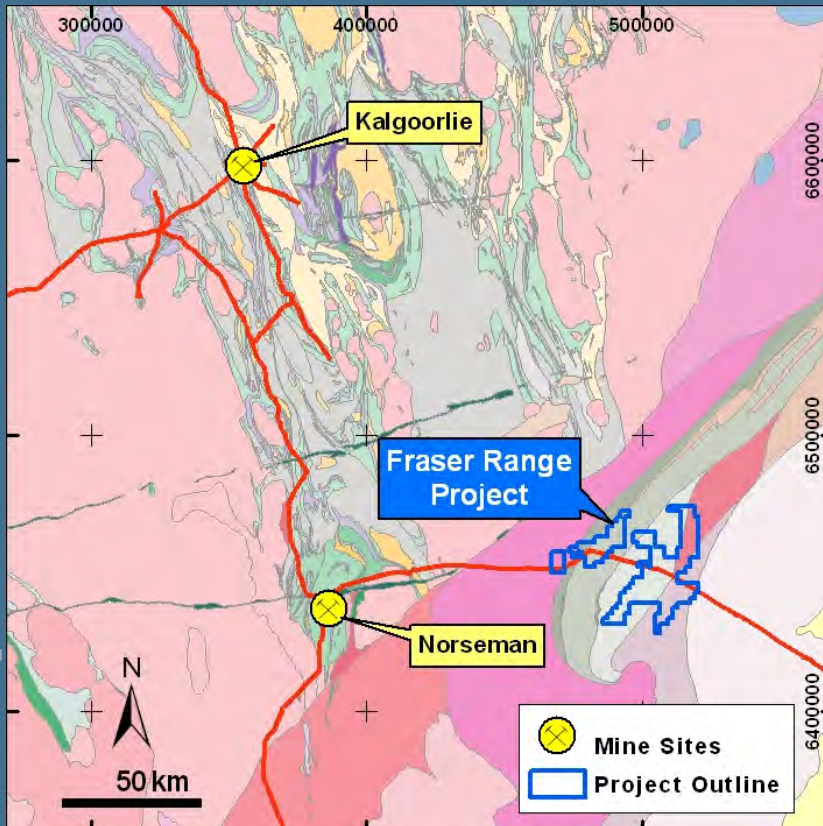
- Proterozoic Bif's in Nabberu Basin
- "Magnetic channels" - aeromagnetics suggest CID's present
- Tenement still in application, early stage



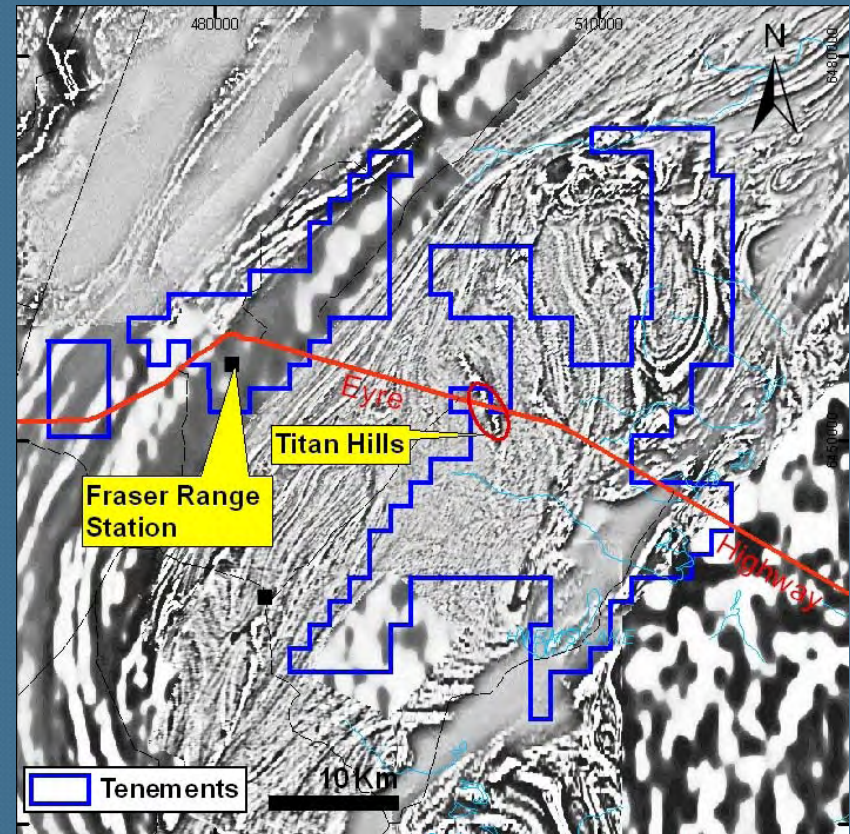
# Fraser Range Project (100%)

Fe, Ti, Au

Geology



Magnetics



Target: Magmatic Titaniferous Iron Deposit in Proterozoic metamorphic rocks

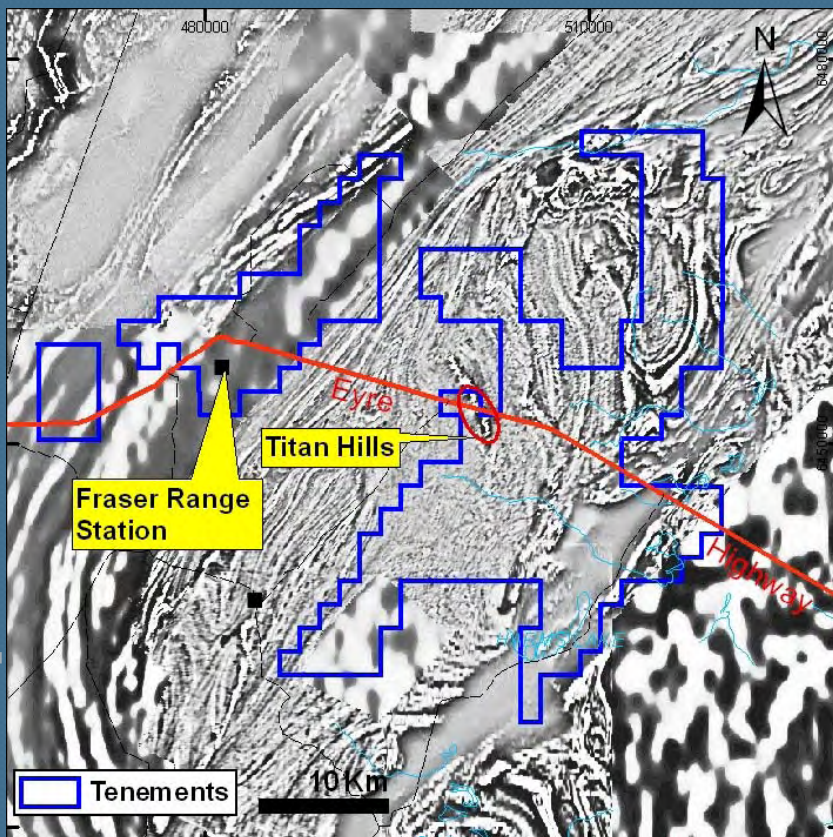
- Also potential for shear hosted Gold deposits (cf Tropicana) and Ni/Cu – PGE's
- Tenements still in application, early stages



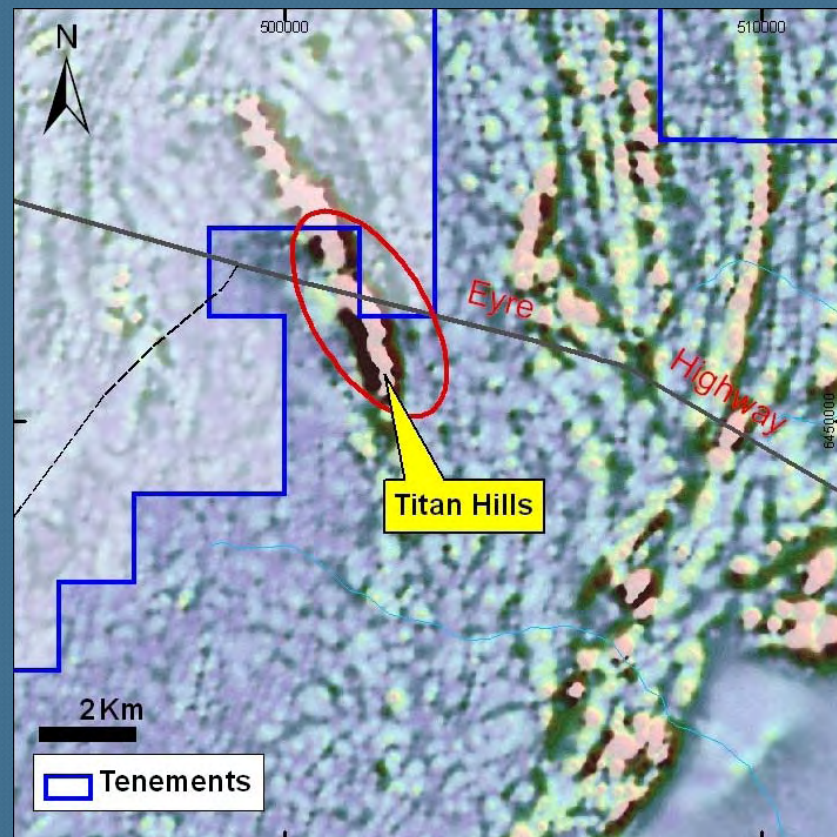
# Fraser Range Project

Fe, Ti, Au

*Magnetics*



*Titaniferous magnetite*



- Aeromagnetics define 7,000m long anomaly, 3,500m on Company tenement
- Rock chips by previous explorers: max 38% TiO<sub>2</sub>
- Tenements still in application, early stages



Exploration is underway.....

“Small opportunities are often the beginning of great.....

**ENTERPRISES”**

**Demosthenes (384BC-32BC)**



# Reporting of Exploration Results

*The information in this report that relates to Exploration Results, Mineral Resources or Ore Reserves is based on information compiled by Dermot Ryan, a Fellow of the Australasian Institute of Mining & Metallurgy. Dermot Ryan is a Director of the Company and a geological consultant to it through XServ Pty Ltd.*

*Dermot Ryan has sufficient experience which is relevant to the style of mineralisation and type of deposit under consideration and to the activity which he is undertaking to qualify as a 'Competent Person' as defined in the 2004 Edition of the 'Australian Code for Reporting of Exploration Results, Mineral Resources and Ore Reserves'. Dermot Ryan consents to the inclusion in this report of the matters based on his information in the form and context in which it appears.*